

# Recombinant Human APEX1 Protein, Myc/DDK-tagged, C13 and N15-labeled

**Cat. No.** APEX1-4224H    **Lot. No.** (See product label)

## SPECIFICATION

<b>Product Overview</b>	APEX1 MS Standard C13 and N15-labeled recombinant protein (NP_542379) with a C-terminal MYC/DDK tag, was expressed in HEK293 cells.
<b>Species</b>	Human
<b>Source</b>	HEK293
<b>Description</b>	The APEX gene encodes the major AP endonuclease in human cells. It encodes the APEX endonuclease, a DNA repair enzyme with apurinic/apyrimidinic (AP) activity. Such AP activity sites occur frequently in DNA molecules by spontaneous hydrolysis, by DNA damaging agents or by DNA glycosylases that remove specific abnormal bases. The AP sites are the most frequent pre-mutagenic lesions that can prevent normal DNA replication. Splice variants have been found for this gene; all encode the same protein. Disruptions in the biological functions related to APEX are associated with many various malignancies and neurodegenerative diseases.
<b>Molecular Mass</b>	35.6 kDa
<b>AA Sequence</b>	MPKRGKKGAVAEDGDEL RTEPEAKKSKTAAKNDKEAAGEGPALYEDPPDQKTSP SGKPATLKICSWNV DGLRAWIKKKGLDWVKEEAPDILCLQETKCSENKLP AELQELP GLSHQYWSAPSDKEGYSGVGLLSRQCPLKVSYGIGDEEHDQEGRVIVAEFDSFVLV TAYVPNAGRGLVRLE YRQRWDEAFRKFLKGLASRKPLVLCGDLNVAHEEIDLRNPK GNKKNAGFTPQERQGF GELLQAVPLADSRHLYPNTPYAYTFWTYMMNARSKNVG

 Tel: 1-631-559-9269    1-516-512-3133

 Email: [info@creative-biomart.com](mailto:info@creative-biomart.com)     Fax: 1-631-938-8127

 45-1 Ramsey Road, Shirley, NY 11967, USA

WRLDYFLLSHLLPALCDSKIRSKALGSDHCPITLYLALTRTRPLEQKLISEEDLAAND  
ILDYKDDDDKV

**Purity** > 80% as determined by SDS-PAGE and Coomassie blue staining

**Stability** Stable for 3 months from receipt of products under proper storage and handling conditions.

**Storage** Store at -80 centigrade. Avoid repeated freeze-thaw cycles.

**Concentration** 50 µg/mL as determined by BCA

**Storage Buffer** 100 mM glycine, 25 mM Tris-HCl, pH 7.3.

## GENE INFORMATION

**Gene Name** [APEX1 apurinic/aprimidinic endodeoxyribonuclease 1 \[ Homo sapiens \(human\) \]](#)

**Official Symbol** [APEX1](#)

**Synonyms** APEX1; APEX nuclease (multifunctional DNA repair enzyme) 1; APEX, APEX nuclease (multifunctional DNA repair enzyme); DNA-(apurinic or apyrimidinic site) lyase; APE; APE 1; APEN; APX; HAP1; REF 1; REF1; AP lyase; protein REF-1; redox factor-1; AP endonuclease class I; apurinic-apyrimidinic endonuclease 1; apurinic/apyrimidinic (abasic) endonuclease; deoxyribonuclease (apurinic or apyrimidinic); APE1; APEX;

**Gene ID** [328](#)

**mRNA Refseq** [NM\\_080648](#)

 Tel: 1-631-559-9269 1-516-512-3133

 Email: [info@creative-biomart.com](mailto:info@creative-biomart.com)  Fax: 1-631-938-8127

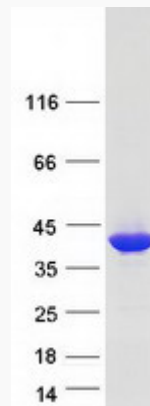
 45-1 Ramsey Road, Shirley, NY 11967, USA

**Protein Refseq** NP\_542379

**MIM** 107748

**UniProt ID** P27695

**SDS-PAGE**



 Tel: 1-631-559-9269 1-516-512-3133

 Email: [info@creative-biomart.com](mailto:info@creative-biomart.com)  Fax: 1-631-938-8127

 45-1 Ramsey Road, Shirley, NY 11967, USA