

Recombinant Full Length Human APEX2 Protein, C-Flag-tagged

Cat. No. APEX2-1035HFL **Lot. No.** (See product label)

SPECIFICATION

Product Overview	Recombinant Full Length Human APEX2 Protein, fused to Flag-tag at C-terminus, was expressed in Mammalian cells.
Species	Human
Source	Mammalian Cells
Description	<p>Apurinic/aprimidinic (AP) sites occur frequently in DNA molecules by spontaneous hydrolysis, by DNA damaging agents or by DNA glycosylases that remove specific abnormal bases. AP sites are pre-mutagenic lesions that can prevent normal DNA replication so the cell contains systems to identify and repair such sites. Class II AP endonucleases cleave the phosphodiester backbone 5' to the AP site. This gene encodes a protein shown to have a weak class II AP endonuclease activity. Most of the encoded protein is located in the nucleus but some is also present in mitochondria. This protein may play an important role in both nuclear and mitochondrial base excision repair. Alternatively spliced transcript variants encoding multiple isoforms have been observed for this gene.</p>
Form	25 mM Tris HCl, pH 7.3, 100 mM glycine, 10% glycerol.
Molecular Mass	57.2 kDa
AA Sequence	MLRVVSWNINGIRRPLQGIVANQEPSNCAAVAVGRILDELADIVCLQETKVTRDALT EPLAIVEGYNSYF SFSRNRSGYSGVATFCKDNATPVAAEEGLSGLFATQNGDVGCY

 Tel: 1-631-559-9269 1-516-512-3133

 Email: info@creative-biomart.com  Fax: 1-631-938-8127

 45-1 Ramsey Road, Shirley, NY 11967, USA

GNMDEFTQEELRALDSEGRALLTQHKI RTWEGKEKTLTLINVYCPHADPGRPERLV
 FKMRFYRLLQIRAEALLAAGSHVILGDLNHTAHRPIDHWDA VNLECFEEDPGRKWMMD
 SLLSNLGCQSASHVGPFFIDSYRCFQPKQEGAFTCWSAVTGARHLNYGSRLDYVL G
 DRTLVIDTFQASFLPEVMGSDHCPVGAVLSVSSVPAKQCPLCTRFLPEFAGTQLKI
 LRFLVPLEQSP VLEQSTLQHNNQTRVQTCQNKAVRSTRPQPSQVGSSRGQKNLK
 SYFQPSPSCPQASPDIELPSLPLMSA LMPKTPEEKAVAKVVKGQAKTSEAKDEKE
 LRTSFWKSVLGAPLRTPCLCGHREPCVMRTVKKPGPNLGR
 RFYMCARPRGPPTDPSSRCNFFLWSRPSTRTRPLEQKLISEEDLAANDILDYKDDD
 DKV

Purity	> 80% as determined by SDS-PAGE and Coomassie blue staining.
Stability	Stable for 12 months from the date of receipt of the product under proper storage and handling conditions. Avoid repeated freeze-thaw cycles.
Storage	Store at -80 centigrade.
Concentration	>50 ug/mL as determined by microplate BCA method.
Preparation	Recombinant protein was captured through anti-DDK affinity column followed by conventional chromatography steps.
Protein Families	Druggable Genome
Protein Pathways	Base excision repair
Full Length	Full L.

GENE INFORMATION

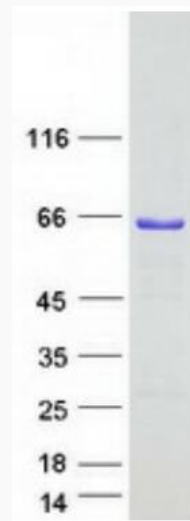
Gene Name [APEX2 apurinic/aprimidinic endodeoxyribonuclease 2 \[Homo sapiens \(human\) \]](#)

 Tel: 1-631-559-9269 1-516-512-3133

 Email: info@creative-biomart.com  Fax: 1-631-938-8127

 45-1 Ramsey Road, Shirley, NY 11967, USA

Official Symbol	APEX2
Synonyms	APE2; XTH2; ZGRF2; APEXL2
Gene ID	27301
mRNA Refseq	NM_014481.4
Protein Refseq	NP_055296.2
MIM	300773
UniProt ID	Q9UBZ4



Coomassie blue staining of purified APEX2 protein.

Tel: 1-631-559-9269 1-516-512-3133

Email: info@creative-biomart.com Fax: 1-631-938-8127

45-1 Ramsey Road, Shirley, NY 11967, USA