

Recombinant Human APEX2 Protein, Myc/DDK-tagged, C13 and N15-labeled

Cat. No. APEX2-3015H **Lot. No.** (See product label)

SPECIFICATION

Product Overview	APEX2 MS Standard C13 and N15-labeled recombinant protein (NP_055296) with a C-terminal MYC/DDK tag, was expressed in HEK293 cells.
Species	Human
Source	HEK293
Description	<p>Apurinic/aprimidinic (AP) sites occur frequently in DNA molecules by spontaneous hydrolysis, by DNA damaging agents or by DNA glycosylases that remove specific abnormal bases. AP sites are pre-mutagenic lesions that can prevent normal DNA replication so the cell contains systems to identify and repair such sites. Class II AP endonucleases cleave the phosphodiester backbone 5' to the AP site. This gene encodes a protein shown to have a weak class II AP endonuclease activity. Most of the encoded protein is located in the nucleus but some is also present in mitochondria. This protein may play an important role in both nuclear and mitochondrial base excision repair. Alternatively spliced transcript variants encoding multiple isoforms have been observed for this gene.</p>
Molecular Mass	57.4 kDa
AA Sequence	MLRVVSWNINGIRRPLQGIVANQEPSNCAAVAVGRILDELADIVCLQETKVTRDALT EPLAIVEGYNSYFSSFRNRSGYSGVATFCKDNATPVAAEEGLSGLFATQNGDVGCY GNMDEFTQEELRALDSEGRALLTQHKIRTWEGKEKTLTLINVYCPHADPGRPERLVF

 Tel: 1-631-559-9269 1-516-512-3133

 Email: info@creative-biomart.com  Fax: 1-631-938-8127

 45-1 Ramsey Road, Shirley, NY 11967, USA

KMRFYRLLQIRAEALLAAGSHVILGDLNTAHRPIDHWDVNLECFEEDPGRKWMDS
 LLSNLGQCQSASHVGPFDISYRCFQPKQEGAFTCWSAVTGARHLNYGSRLDYVLGD
 RTLVIDTFQASFLLEVMGSDHCPVGAVLSVSSVPAKQCPPLCTRFLPEFAGTQLKIL
 RFLVPLEQSPVLEQSTLQHNNQTRVQTCQNKAVRSTRPQPSQVGSRRGQKNLKS
 YFQPSPSCPQASPDIELPSLPLMSALMTPKTPEEKAVAKVVKGQAKTSEAKDEKELR
 TSWKSVLAGPLRTPLCGGHREPCVMRTVKKPGPNLGRRFYMCARPRGPPTDPSS
 RCNFFLWSRPSTRTRPLEQKLISEEDLAANDILDYKDDDDKV

Purity > 80% as determined by SDS-PAGE and Coomassie blue staining

Stability Stable for 3 months from receipt of products under proper storage and handling conditions.

Storage Store at -80 centigrade. Avoid repeated freeze-thaw cycles.

Concentration 50 µg/mL as determined by BCA

Storage Buffer 100 mM glycine, 25 mM Tris-HCl, pH 7.3.

GENE INFORMATION

Gene Name [APEX2 apurinic/apyrimidinic endodeoxyribonuclease 2 \[Homo sapiens \(human\) \]](#)

Official Symbol [APEX2](#)

Synonyms APEX2; APEX nuclease (apurinic/apyrimidinic endonuclease) 2; DNA-(apurinic or apyrimidinic site) lyase 2; APE2; APEXL2; XTH2; APEX nuclease 2; AP endonuclease 2; AP endonuclease XTH2; APEX nuclease-like 2; apurinic-apyrimidinic endonuclease 2; DNA-apurinic or apyrimidinic site lyase 2; apurinic/apyrimidinic endonuclease-like 2;

 Tel: 1-631-559-9269 1-516-512-3133

 Email: info@creative-biomart.com  Fax: 1-631-938-8127

 45-1 Ramsey Road, Shirley, NY 11967, USA

Gene ID 27301

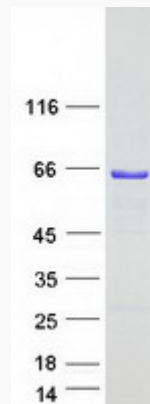
mRNA Refseq NM_014481

Protein Refseq NP_055296

MIM 300773

UniProt ID Q9UBZ4

SDS-PAGE



 Tel: 1-631-559-9269 1-516-512-3133

 Email: info@creative-biomart.com  Fax: 1-631-938-8127

 45-1 Ramsey Road, Shirley, NY 11967, USA