

Recombinant Human APG3L protein, GST-tagged

Cat. No. APG3L-678H Lot. No. (See product label)

SPECIFICATION

Product Overview	Human APG3L partial ORF (NP_071933, 1 a.a. - 100 a.a.) recombinant protein with GST-tag at N-terminal.
Species	Human
Source	Wheat Germ
Description	This gene encodes a ubiquitin-like-conjugating enzyme and is a component of ubiquitination-like systems involved in autophagy, the process of degradation, turnover and recycling of cytoplasmic constituents in eukaryotic cells. This protein is known to play a role in regulation of autophagy during cell death. A pseudogene of this gene is located on chromosome 20. Alternative splicing results in multiple transcript variants encoding different isoforms. [provided by RefSeq, Jul 2013]
Molecular Mass	36.74 kDa
AA Sequence	MQNVINTVKGKALEVAEYLTPVLKESKFKETGVITPEEFVAAGDHLVHHCPWQWAT GEELKVKAYLPTGKQFLVTKNVPCYKRCKQMEYSDELEAIIIE
Applications	Enzyme-linked Immunoabsorbent Assay; Western Blot (Recombinant protein); Antibody Production; Protein Array
Notes	Best use within three months from the date of receipt of this protein.
Storage	Store at -80 centigrade. Aliquot to avoid repeated freezing and thawing.

 Tel: 1-631-559-9269 1-516-512-3133

 Email: info@creative-biomart.com  Fax: 1-631-938-8127

 45-1 Ramsey Road, Shirley, NY 11967, USA

Storage Buffer 50 mM Tris-HCl, 10 mM reduced Glutathione, pH=8.0 in the elution buffer.

GENE INFORMATION

Gene Name ATG3 ATG3 autophagy related 3 homolog (*S. cerevisiae*) [*Homo sapiens*]

Official Symbol ATG3

Synonyms ATG3; ATG3 autophagy related 3 homolog (*S. cerevisiae*); APG3 autophagy 3 like (*S. cerevisiae*) , APG3L; ubiquitin-like-conjugating enzyme ATG3; DKFZp564M1178; FLJ22125; MGC15201; PC3 96; hApg3; 2610016C12Rik; autophagy-related protein 3; APG3; APG3L; PC3-96; APG3-LIKE;

Gene ID 64422

mRNA Refseq NM_022488

Protein Refseq NP_071933

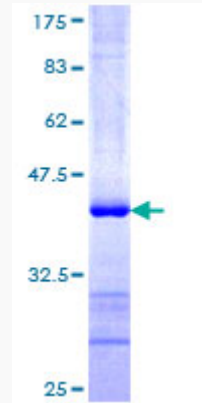
MIM 609606

UniProt ID Q9NT62

 Tel: 1-631-559-9269 1-516-512-3133

 Email: info@creative-biomart.com  Fax: 1-631-938-8127

 45-1 Ramsey Road, Shirley, NY 11967, USA



12.5% SDS-PAGE Stained with Coomassie Blue.

 Tel: 1-631-559-9269 1-516-512-3133

 Email: info@creative-biomart.com  Fax: 1-631-938-8127

 45-1 Ramsey Road, Shirley, NY 11967, USA