

Recombinant Human APG7L protein, GST-tagged

Cat. No. APG7L-680H **Lot. No.** (See product label)

SPECIFICATION

Product Overview	Human APG7L partial ORF (NP_006386, 1 a.a. - 100 a.a.) recombinant protein with GST-tag at N-terminal.
Species	Human
Source	Wheat Germ
Description	This gene encodes a ubiquitin-like-conjugating enzyme and is a component of ubiquitination-like systems involved in autophagy, the process of degradation, turnover and recycling of cytoplasmic constituents in eukaryotic cells. This protein is known to play a role in regulation of autophagy during cell death. A pseudogene of this gene is located on chromosome 20. Alternative splicing results in multiple transcript variants encoding different isoforms. [provided by RefSeq, Jul 2013]
Molecular Mass	36.74 kDa
AA Sequence	MAAATGDPGLSKLQFAPFSSALDVGFWHELTQKKLNEYRLDEAPKDIKGYYYNGDS AGLPARLTLEFSAFDMSAPTPARCCPAIGTLYNTNTLESFKTAD
Applications	Enzyme-linked Immunoabsorbent Assay; Western Blot (Recombinant protein); Antibody Production; Protein Array
Notes	Best use within three months from the date of receipt of this protein.
Storage	Store at -80 centigrade. Aliquot to avoid repeated freezing and thawing.

 Tel: 1-631-559-9269 1-516-512-3133

 Email: info@creative-biomart.com  Fax: 1-631-938-8127

 45-1 Ramsey Road, Shirley, NY 11967, USA

Storage Buffer 50 mM Tris-HCl, 10 mM reduced Glutathione, pH=8.0 in the elution buffer.

GENE INFORMATION

Gene Name [ATG7](#) [ATG7 autophagy related 7 homolog \(S. cerevisiae\)](#) [[Homo sapiens](#)]

Official Symbol [ATG7](#)

Synonyms [ATG7](#); [ATG7 autophagy related 7 homolog \(S. cerevisiae\)](#); [APG7 autophagy 7 like \(S. cerevisiae\)](#) , [APG7L](#); [ubiquitin-like modifier-activating enzyme ATG7](#); [DKFZp434N0735](#); [GSA7](#); [hAGP7](#); [autophagy-related protein 7](#); [ATG12-activating enzyme E1 ATG7](#); [ubiquitin activating enzyme E1-like protein](#); [ubiquitin-activating enzyme E1-like protein](#); [APG7L](#); [APG7-LIKE](#);

Gene ID [10533](#)

mRNA Refseq [NM_001136031](#)

Protein Refseq [NP_001129503](#)

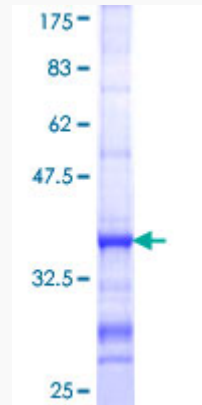
MIM [608760](#)

UniProt ID [O95352](#)

 Tel: 1-631-559-9269 1-516-512-3133

 Email: info@creative-biomart.com  Fax: 1-631-938-8127

 45-1 Ramsey Road, Shirley, NY 11967, USA



12.5% SDS-PAGE Stained with Coomassie Blue.

Tel: 1-631-559-9269 1-516-512-3133

Email: info@creative-biomart.com Fax: 1-631-938-8127

45-1 Ramsey Road, Shirley, NY 11967, USA