

Recombinant Human APH1A Full Length Transmembrane protein (1-247 aa), His-SUMO-tagged

Cat. No. APH1A-2712H Lot. No. (See product label)

SPECIFICATION

Product Overview	Recombinant Human APH1A Protein (1-247 aa) is produced by in vitro E. coli expression system. This protein is fused with a 6xHis-SUMO tag at the N-terminal. Protein Description: Partial.
Species	Human
Source	E.coli
ProteinLength	1-247aa
Form	If the delivery form is liquid, the default storage buffer is Tris/PBS-based buffer, 5%-50% glycerol. If the delivery form is lyophilized powder, the buffer before lyophilization is Tris/PBS-based buffer, 6% Trehalose, pH 8.0.
Molecular Mass	42.9kDa
AA Sequence	MGA AVFFGCTFVAFGPAFALFLITVAGDPLRVIIIVAGAFFWLVSLLLASVWVFILVHV TDRSDARLQYGLLIFGAAVSVLLQEVFRFAYYKLLKKADEGLASLSEDGRSPISIRQM AYVSGLSFGIISGVFSVINILADALGPGVVGIIHGDSPPYFLTSAFLTAAIILLHTFWGVV FFDACERRRYWALGLVVGSHLLTSGTLFLNPWYEASLLPIYAVTVSMGLWAFITAGG SLRSIQRSLCKD
Purity	Greater than 90% as determined by SDS-PAGE.

 Tel: 1-631-559-9269 1-516-512-3133

 Email: info@creative-biomart.com  Fax: 1-631-938-8127

 45-1 Ramsey Road, Shirley, NY 11967, USA

Storage Store at -20°C/-80°C upon receipt, aliquoting is necessary for mutiple use. Avoid repeated freeze-thaw cycles.

Reconstitution Please reconstitute protein in deionized sterile water to a concentration of 0.1-1.0 mg/mL. We recommend to add 5-50% of glycerol (final concentration) and aliquot for long-term storage at -20°C/-80°C. Our default final concentration of glycerol is 50%.

GENE INFORMATION

Gene Name APH1A anterior pharynx defective 1 homolog A (C. elegans) [Homo sapiens]

Official Symbol APH1A

Synonyms APH1A; anterior pharynx defective 1 homolog A (C. elegans); gamma-secretase subunit APH-1A; APH 1A; CGI 78; aph-1alpha; presenilin-stabilization factor; APH-1; APH-1A; CGI-78; 6530402N02Rik;

Gene ID 51107

mRNA Refseq NM_001077628

Protein Refseq NP_001071096

MIM 607629

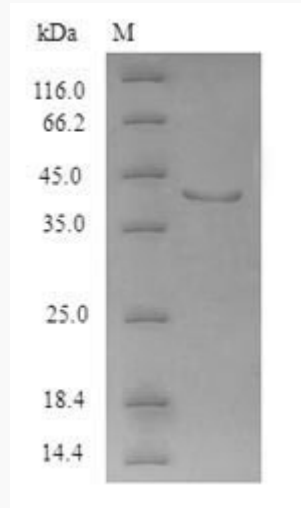
UniProt ID Q96BI3

 Tel: 1-631-559-9269 1-516-512-3133

 Email: info@creative-biomart.com  Fax: 1-631-938-8127

 45-1 Ramsey Road, Shirley, NY 11967, USA

SDS-PAGE



 Tel: 1-631-559-9269 1-516-512-3133

 Email: info@creative-biomart.com  Fax: 1-631-938-8127

 45-1 Ramsey Road, Shirley, NY 11967, USA