

Recombinant Human API5 protein, GST-tagged

Cat. No. API5-681H **Lot. No.** (See product label)

SPECIFICATION

Product Overview	Human API5 partial ORF (AAH17709, 400 a.a. - 504 a.a.) recombinant protein with GST-tag at N-terminal.
Species	Human
Source	Wheat Germ
Description	This gene encodes an apoptosis inhibitory protein whose expression prevents apoptosis after growth factor deprivation. This protein suppresses the transcription factor E2F1-induced apoptosis and also interacts with, and negatively regulates Acinus, a nuclear factor involved in apoptotic DNA fragmentation. Its depletion enhances the cytotoxic action of the chemotherapeutic drugs. Multiple alternatively spliced transcript variants encoding different isoforms have been identified. [provided by RefSeq, Aug 2011]
Molecular Mass	37.18 kDa
AA Sequence	GEALKTEENKIKVVALKITNNINVLIKDLFHIPPSYKSTVTLSWKPVQKVEIGQKRASED TTSGSPPKKSSAGPKRDARQIYNPPSGKYSSNLGNFNYSRLQGK
Applications	Enzyme-linked Immunoabsorbent Assay; Western Blot (Recombinant protein); Antibody Production; Protein Array
Notes	Best use within three months from the date of receipt of this protein.

 Tel: 1-631-559-9269 1-516-512-3133

 Email: info@creative-biomart.com  Fax: 1-631-938-8127

 45-1 Ramsey Road, Shirley, NY 11967, USA

Storage Store at -80 centigrade. Aliquot to avoid repeated freezing and thawing.

Storage Buffer 50 mM Tris-HCl, 10 mM reduced Glutathione, pH=8.0 in the elution buffer.

GENE INFORMATION

Gene Name [API5 apoptosis inhibitor 5 \[Homo sapiens \]](#)

Official Symbol [API5](#)

Synonyms

API5; apoptosis inhibitor 5; AAC 11; AAC11; API5 like 1; API5L1; fibroblast growth factor 2 interacting factor 2; migration inducing protein MIG8; FIF; antiapoptosis clone 11 protein; migration-inducing protein MIG8; cell migration-inducing gene 8 protein; fibroblast growth factor 2-interacting factor 2; AAC-11; FLJ11587;

Gene ID [8539](#)

mRNA Refseq [NM_001142930](#)

Protein Refseq [NP_001136402](#)

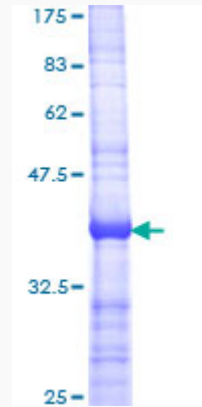
MIM [609774](#)

UniProt ID [Q9BZZ5](#)

 Tel: 1-631-559-9269 1-516-512-3133

 Email: info@creative-biomart.com  Fax: 1-631-938-8127

 45-1 Ramsey Road, Shirley, NY 11967, USA



12.5% SDS-PAGE Stained with Coomassie Blue.

Tel: 1-631-559-9269 1-516-512-3133

Email: info@creative-biomart.com Fax: 1-631-938-8127

45-1 Ramsey Road, Shirley, NY 11967, USA