

Recombinant Human APLF Protein, Myc/DDK-tagged, C13 and N15-labeled

Cat. No. APLF-1128H **Lot. No.** (See product label)

SPECIFICATION

Product Overview	APLF MS Standard C13 and N15-labeled recombinant protein (NP_775816) with a C-terminal MYC/DDK tag, was expressed in HEK293 cells.
Species	Human
Source	HEK293
Description	C2ORF13 is a component of the cellular response to chromosomal DNA single- and double-strand breaks.
Molecular Mass	57 kDa
AA Sequence	<p>MSGGFELQPRDGGPRVALAPGETVIGRGP LLGITDKRVSRRHAILEVAGGQLRIKPIH TNPCFYQSSEKSQLLPLKPNLWCYLNPGDSF SLLVDKYIFRILSIPSEVEMQCTLRNS QVLDEDNILNETPKSPVINLPHETT GASQLEGSTEIAKTQMTPTNSVSFLGENRDCNK QQPILAERKRILPTWMLAEHLSDQNLSVPAISGGNVIQSGSKEEICKDKSQLNTTQQ GRRQLISSGSSSENTSAEQDTGEECKNTDQEESTISSKEMPQSFSAITLSNTEMNNIK TNAQRNKLPIEELGKVSXHKIATKRTPH KEDEAMSCSENCSSAQGDSLQDESQGS SESSSNPSNPETLHAKATDSVLQGSEGNKVKRTSCMYGANCYRKNPVHFQHFHSH GDSYGGVQIVGQDETDDRPECPYGP SCYRKNPQHKIEYRHNTLPVRNVLDEDND NVGQPNEYDLNDSFLDDEEEDYEPTDESDWEPGKEDEEKEDVEELLKEAKRFMK RKTRTRPLEQKLISEEDLAANDILDYKDDDDKV</p>
Purity	> 80% as determined by SDS-PAGE and Coomassie blue staining

 Tel: 1-631-559-9269 1-516-512-3133

 Email: info@creative-biomart.com  Fax: 1-631-938-8127

 45-1 Ramsey Road, Shirley, NY 11967, USA

Stability	Stable for 3 months from receipt of products under proper storage and handling conditions.
Storage	Store at -80 centigrade. Avoid repeated freeze-thaw cycles.
Concentration	50 µg/mL as determined by BCA
Storage Buffer	100 mM glycine, 25 mM Tris-HCl, pH 7.3.

GENE INFORMATION

Gene Name	APLF aprataxin and PNKP like factor [Homo sapiens (human)]
Official Symbol	APLF
Synonyms	APLF; aprataxin and PNKP like factor; C2orf13, chromosome 2 open reading frame 13; aprataxin and PNK-like factor; MGC47799; XRCC1-interacting protein 1; PNK and APTX-like FHA protein; aprataxin- and PNK-like factor; apurinic-aprimidinic endonuclease APLF; PNK and APTX-like FHA domain-containing protein; APFL; PALF; Xip1; C2orf13; FLJ16593;
Gene ID	200558
mRNA Refseq	NM_173545
Protein Refseq	NP_775816
MIM	611035
UniProt ID	Q8IW19

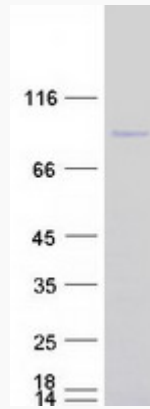
 Tel: 1-631-559-9269 1-516-512-3133

 Email: info@creative-biomart.com  Fax: 1-631-938-8127

 45-1 Ramsey Road, Shirley, NY 11967, USA



SDS-PAGE



Tel: 1-631-559-9269 1-516-512-3133

Email: info@creative-biomart.com Fax: 1-631-938-8127

45-1 Ramsey Road, Shirley, NY 11967, USA