

# Recombinant Full Length Human APLNR Protein, C-Flag-tagged

**Cat. No.** APLNR-596HFL    **Lot. No.** (See product label)

## SPECIFICATION

### Product Overview

Recombinant Full Length Human APLNR Protein, fused to Flag-tag at C-terminus, was expressed in Mammalian cells.

### Species

Human

### Source

Mammalian Cells

### Description

This gene encodes a member of the G protein-coupled receptor gene family. The encoded protein is related to the angiotensin receptor, but is actually an apelin receptor that inhibits adenylate cyclase activity and plays a counter-regulatory role against the pressure action of angiotensin II by exerting hypertensive effect. It functions in the cardiovascular and central nervous systems, in glucose metabolism, in embryonic and tumor angiogenesis and as a human immunodeficiency virus (HIV-1) coreceptor. Two transcript variants resulting from alternative splicing have been identified.

### Form

25 mM Tris HCl, pH 7.3, 100 mM glycine, 10% glycerol.

### Molecular Mass

42.5 kDa

### AA Sequence

MEEGGDFDNYYGADNQSECEYTDWKSSGALIPAIYMLVFLGTTGNGLVLWTVFRS  
SREKRRSADIFIAS LAVADLTFVVTLPWATYTYRDYDWPFGTFFCKLSSYLIFVNMV  
ASVFCLTGLSFDRLAIVRPVANARL RLRVSGAVATAVLWVLAALLAMPVMVLRRTG  
DLENTTKVQCXYMDYSMVATVSSEWAWEVGLGVSSTTVGF VVPFTIMLTCYFFIAQTI

 Tel: 1-631-559-9269    1-516-512-3133

 Email: [info@creative-biomart.com](mailto:info@creative-biomart.com)     Fax: 1-631-938-8127

 45-1 Ramsey Road, Shirley, NY 11967, USA

AGHFRKERIEGLRKRRRLLSIIIVLVVTFALCWMPYHLVKTLYMLGSLHWP CDFDL  
 FLMNIFPYCTCISYVNSCLNPFLYAFFDPRFRQACTSMLCCGQSRCAGTSHSSSGEK  
 SASYSSGH  
 SQGPGPNMGKGGEQMHEKSIPYSQETLVVDTRTRPLEQKLISEEDLAANDILDYKD  
 DDDKV

**Purity** > 80% as determined by SDS-PAGE and Coomassie blue staining.

**Stability** Stable for 12 months from the date of receipt of the product under proper storage and handling conditions. Avoid repeated freeze-thaw cycles.

**Storage** Store at -80 centigrade.

**Concentration** >50 ug/mL as determined by microplate BCA method.

**Preparation** Recombinant protein was captured through anti-DDK affinity column followed by conventional chromatography steps.

**Protein Families** Druggable Genome, GPCR, Transmembrane

**Protein Pathways** Neuroactive ligand-receptor interaction

**Full Length** Full L.

## GENE INFORMATION

**Gene Name** [APLNR apelin receptor \[ Homo sapiens \(human\) \]](#)

**Official Symbol** [APLNR](#)

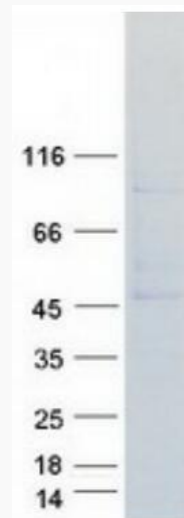
**Synonyms** APJ; APJR; HG11; AGTRL1

 Tel: 1-631-559-9269 1-516-512-3133

 Email: [info@creative-biomart.com](mailto:info@creative-biomart.com)  Fax: 1-631-938-8127

 45-1 Ramsey Road, Shirley, NY 11967, USA

<b>Gene ID</b>	187
<b>mRNA Refseq</b>	NM_005161.6
<b>Protein Refseq</b>	NP_005152.1
<b>MIM</b>	600052
<b>UniProt ID</b>	P35414



Coomassie blue staining of purified APLNR protein.

 Tel: 1-631-559-9269 1-516-512-3133

 Email: [info@creative-biomart.com](mailto:info@creative-biomart.com)  Fax: 1-631-938-8127

 45-1 Ramsey Road, Shirley, NY 11967, USA