

# Recombinant Human APLNR Protein, Myc/DDK-tagged, C13 and N15-labeled

Cat. No. APLNR-6124H Lot. No. (See product label)

## SPECIFICATION

<b>Product Overview</b>	APLNR MS Standard C13 and N15-labeled recombinant protein (NP_005152) with a C-terminal MYC/DDK tag, was expressed in HEK293 cells.
<b>Species</b>	Human
<b>Source</b>	HEK293
<b>Description</b>	This gene encodes a member of the G protein-coupled receptor gene family. The encoded protein is related to the angiotensin receptor, but is actually an apelin receptor that inhibits adenylate cyclase activity and plays a counter-regulatory role against the pressure action of angiotensin II by exerting hypertensive effect. It functions in the cardiovascular and central nervous systems, in glucose metabolism, in embryonic and tumor angiogenesis and as a human immunodeficiency virus (HIV-1) coreceptor. Two transcript variants resulting from alternative splicing have been identified.
<b>Molecular Mass</b>	42.7 kDa
<b>AA Sequence</b>	MEEGGDFDNYYGADNQSECEYTDWKSSGALIPAIYMLVFLGTTGNGLVLWTVFRS SREKRRSADIFIASLAVADLTFVVTLPPLWATYTYRDYDWPFGTFFCKLSSYLIFVNMY ASVFCLTGLSFDRLAIVRPVANARLRLRVSGAVATAVLWVLAALLAMPVMVLRRTTG DLENTTKVQCYMDYSMVATVSSEWAWEVGLGVSSSTTVGFVVPFTIMLTCYFFIAQTI AGHFRKERIEGLRKRRRLLSIIVVLVVTFALCWMPYHLVKTLYMLGSLHWP CDFDLF

 Tel: 1-631-559-9269 1-516-512-3133

 Email: [info@creative-biomart.com](mailto:info@creative-biomart.com)  Fax: 1-631-938-8127

 45-1 Ramsey Road, Shirley, NY 11967, USA



LMNIFPYCTCISYVNSCLNPFLYAFFDPRFRQACTSMLCCGQSRCAGTSHSSSGEK  
SASYSSGHSQGPMPNMKGKGGEQMHEKSIPYSQETLVVDTRTRPLEQKLISEEDLAA  
NDILDYKDDDDKV

**Purity** > 80% as determined by SDS-PAGE and Coomassie blue staining

**Stability** Stable for 3 months from receipt of products under proper storage and handling conditions.

**Storage** Store at -80 centigrade. Avoid repeated freeze-thaw cycles.

**Concentration** 50 µg/mL as determined by BCA

**Storage Buffer** 100 mM glycine, 25 mM Tris-HCl, pH 7.3.

## GENE INFORMATION

**Gene Name** [APLNR apelin receptor \[ Homo sapiens \(human\) \]](#)

**Official Symbol** [APLNR](#)

**Synonyms** APLNR; apelin receptor; AGTRL1, angiotensin II receptor like 1; APJ; APJ (apelin) receptor; APJR; FLJ90771; APJ receptor; HG11 orphan receptor; angiotensin receptor-like 1; G protein-coupled receptor APJ; G-protein coupled receptor APJ; angiotensin II receptor-like 1; G-protein coupled receptor HG11; HG11; AGTRL1; FLJ96609; MGC45246;

**Gene ID** [187](#)

**mRNA Refseq** [NM\\_005161](#)

Tel: 1-631-559-9269 1-516-512-3133

Email: [info@creative-biomart.com](mailto:info@creative-biomart.com) Fax: 1-631-938-8127

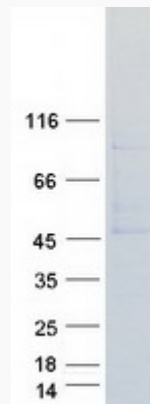
45-1 Ramsey Road, Shirley, NY 11967, USA

**Protein Refseq** NP\_005152

**MIM** 600052

**UniProt ID** P35414

**SDS-PAGE**



 Tel: 1-631-559-9269 1-516-512-3133

 Email: [info@creative-biomart.com](mailto:info@creative-biomart.com)  Fax: 1-631-938-8127

 45-1 Ramsey Road, Shirley, NY 11967, USA