

Recombinant Human APLP1 Protein, His-tagged

Cat. No. APLP1-63H **Lot. No.** (See product label)

SPECIFICATION

Product Overview	Recombinant Human Amyloid-like Protein 1 is produced by our Mammalian expression system and the target gene encoding Gly42-Pro212 is expressed with a 6His tag at the C-terminus.
Species	Human
Source	Human Cells
ProteinLength	Gly42-Pro212
Description	Amyloid-like protein 1 (APLP-1) is a member of the highly conserved amyloid precursor protein gene family. APLP1 is a membrane-associated glycoprotein that is cleaved by secretases in a manner similar to amyloid beta A4 precursor protein cleavage. APLP1, together with APLP2, are important modulators of glucose. APLP1 may also play a role in synaptic maturation during cortical development, and is genetically linked to Alzheimer's disease.
Form	Lyophilized from a 0.2 um filtered solution of PBS, 1mM EDTA, pH7.4.
AA Sequence	GGSPGAAEAPGSAQVAGLCGRLTLHRDLRTGRWEPDPQRSRRCLRDPQRVLEYC RQMYPELQIARV EQATQAIPMERWCGGSRSGSCAHPHHQVVPFRCLPGEFVSEAL LVPEGCRFLHQERMDQCESSTRR HQEAQEACSSQGLILHGSGMLLPCGSDRFRG V EYVCCPPHHHHHH
Endotoxin	Less than 0.1 ng/ug (1 EU/ug).

 Tel: 1-631-559-9269 1-516-512-3133

 Email: info@creative-biomart.com  Fax: 1-631-938-8127

 45-1 Ramsey Road, Shirley, NY 11967, USA

Purity	>95%
Storage	<p>Lyophilized protein should be stored at < -20 centigrade, though stable at room temperature for 3 weeks.</p> <p>Reconstituted protein solution can be stored at 4-7 centigrade for 2-7 days.</p> <p>Aliquots of reconstituted samples are stable at < -20 centigrade for 3 months.</p>
Quality Statement	Purity: Greater than 95% as determined by reducing SDS-PAGE.
Shipping	<p>The product is shipped at ambient temperature.</p> <p>Upon receipt, store it immediately at the temperature listed below.</p>

GENE INFORMATION

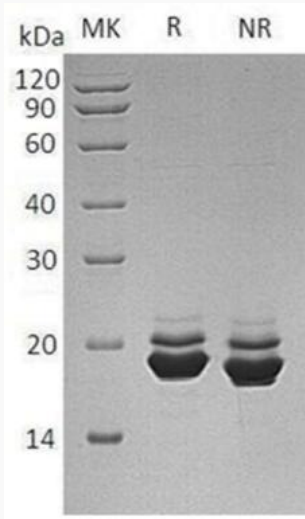
Gene Name	APLP1 amyloid beta precursor like protein 1 [Homo sapiens (human)]
Official Symbol	APLP1
Synonyms	Amyloid-like protein 1; APLP; APLP-1; C30; APLP1
Gene ID	333
mRNA Refseq	NM_005166.5
Protein Refseq	NP_005157.1
MIM	104775
UniProt ID	P51693

 Tel: 1-631-559-9269 1-516-512-3133

 Email: info@creative-biomart.com  Fax: 1-631-938-8127

 45-1 Ramsey Road, Shirley, NY 11967, USA

SDS-PAGE



 Tel: 1-631-559-9269 1-516-512-3133

 Email: info@creative-biomart.com  Fax: 1-631-938-8127

 45-1 Ramsey Road, Shirley, NY 11967, USA