

Recombinant Human APLP1 protein, GST-tagged

Cat. No. APLP1-687H **Lot. No.** (See product label)

SPECIFICATION

Product Overview	Human APLP1 partial ORF (AAH12889, 523 a.a. - 625 a.a.) recombinant protein with GST-tag at N-terminal.
Species	Human
Source	Wheat Germ
Description	This gene encodes a member of the highly conserved amyloid precursor protein gene family. The encoded protein is a membrane-associated glycoprotein that is cleaved by secretases in a manner similar to amyloid beta A4 precursor protein cleavage. This cleavage liberates an intracellular cytoplasmic fragment that may act as a transcriptional activator. The encoded protein may also play a role in synaptic maturation during cortical development. Alternatively spliced transcript variants encoding different isoforms have been described. [provided by RefSeq, Jul 2008]
Molecular Mass	36.96 kDa
AA Sequence	LPKGSTEQDAASPEKEKMNPLEQYERKVNASVPRGFPFHSSEIQRDELAPAGTGVS REAVSGLLIMGAGGGSLIVLSMLLLRRKKPYGAISHGVVEVDPMLTL
Applications	Enzyme-linked Immunoabsorbent Assay; Western Blot (Recombinant protein); Antibody Production; Protein Array
Notes	Best use within three months from the date of receipt of this protein.

 Tel: 1-631-559-9269 1-516-512-3133

 Email: info@creative-biomart.com  Fax: 1-631-938-8127

 45-1 Ramsey Road, Shirley, NY 11967, USA

Storage Store at -80 centigrade. Aliquot to avoid repeated freezing and thawing.

Storage Buffer 50 mM Tris-HCl, 10 mM reduced Glutathione, pH=8.0 in the elution buffer.

GENE INFORMATION

Gene Name [APLP1 amyloid beta \(A4\) precursor-like protein 1 \[Homo sapiens \]](#)

Official Symbol [APLP1](#)

Synonyms APLP1; amyloid beta (A4) precursor-like protein 1; amyloid-like protein 1; amyloid precursor like protein 1; amyloid like protein 1; APLP; APLP-1; amyloid precursor-like protein 1;

Gene ID [333](#)

mRNA Refseq [NM_001024807](#)

Protein Refseq [NP_001019978](#)

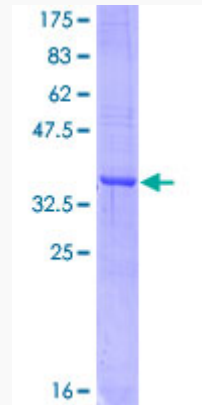
MIM [104775](#)

UniProt ID [P51693](#)

 Tel: 1-631-559-9269 1-516-512-3133

 Email: info@creative-biomart.com  Fax: 1-631-938-8127

 45-1 Ramsey Road, Shirley, NY 11967, USA



12.5% SDS-PAGE Stained with Coomassie Blue.

 Tel: 1-631-559-9269 1-516-512-3133

 Email: info@creative-biomart.com  Fax: 1-631-938-8127

 45-1 Ramsey Road, Shirley, NY 11967, USA