

Recombinant Human APLP2 Protein, Myc/DDK-tagged, C13 and N15-labeled

Cat. No. APLP2-3275H **Lot. No.** (See product label)

SPECIFICATION

Product Overview

APLP2 MS Standard C13 and N15-labeled recombinant protein (NP_001135749) with a C-terminal MYC/DDK tag, was expressed in HEK293 cells.

Species

Human

Source

HEK293

Description

This gene encodes amyloid precursor- like protein 2 (APLP2), which is a member of the APP (amyloid precursor protein) family including APP, APLP1 and APLP2. This protein is ubiquitously expressed. It contains heparin-, copper- and zinc- binding domains at the N-terminus, BPTI/Kunitz inhibitor and E2 domains in the middle region, and transmembrane and intracellular domains at the C-terminus. This protein interacts with major histocompatibility complex (MHC) class I molecules. The synergy of this protein and the APP is required to mediate neuromuscular transmission, spatial learning and synaptic plasticity. This protein has been implicated in the pathogenesis of Alzheimer's disease. Multiple alternatively spliced transcript variants encoding different isoforms have been identified.

Molecular Mass

79.1 kDa

AA Sequence

MAATGTAAAAATGRLLLLLVGLTAPALALAGYIEALAAANAGTGFVAEAPQIAMFCGK
LNMHVNIQTGKWEPTGTGKSCFETKEEVLQYQCQEMYPELQITNVMEANQRVSDN
WCRRDKKQCKSRFVTPFKCLVGEFVSDVLLVPEKCQFFHKERMEVCENHQHWHTV

 Tel: 1-631-559-9269 1-516-512-3133

 Email: info@creative-biomart.com  Fax: 1-631-938-8127

 45-1 Ramsey Road, Shirley, NY 11967, USA

VKEACLTQGMTLYSYGMLLPCGVDQFHGTEYVCCPQTKIIGSVSKEEEEEDEEEEEE
 EEDEEEDYDVYKSEFPTEADLEDFTEAAVDEDEDEEEEGEEVVEDRDYDYDTFKGD
 DYNEENPTEPGSDGTMSDKEITHDVKVPPTPLPTNDVDVYFETSADDNEHARFQKA
 KEQLEIRHRNRMDRVKKEWEEAELQAKNLPKAERQTLIQHFQAMVKALEKEAASEK
 QQLVETHLARVEAMLNDRRRMALENYLAALQSDPPRPHRILQALRRYVRAENKDRL
 HTIRHYQHVLAVDPEKAAQMKSQVMTHLVIEERRNQSLSLLYKVPYVAQEIQEEID
 ELLQEQRADMDQFTASISETPVDVRVSSEEESEEIPPFHPPHPPALPENEGSGVGEQ
 DGGLIGAEKVINSKNKVDENMVIDETLDVKEMIFNAERVGGLEEEERESVGPLREDF
 SLSSSALIGLLVIAVAIATVIVISLVMLRKRQYGTISHGIVEVDPMLTPEERHLNKMQNH
 GYENPTYKYLEQMQITRTRPLEQKLISEEDLAANDILDYKDDDDKV

Purity > 80% as determined by SDS-PAGE and Coomassie blue staining

Stability Stable for 3 months from receipt of products under proper storage and handling conditions.

Storage Store at -80 centigrade. Avoid repeated freeze-thaw cycles.

Concentration 50 µg/mL as determined by BCA

Storage Buffer 100 mM glycine, 25 mM Tris-HCl, pH 7.3.

GENE INFORMATION

Gene Name [APLP2 amyloid beta precursor like protein 2 \[Homo sapiens \(human\) \]](#)

Official Symbol [APLP2](#)

Synonyms APLP2; amyloid beta (A4) precursor-like protein 2; APPL2; amyloid-like protein 2; APPH; CDEI box-binding protein; amyloid precursor protein homolog HSD-2; CDEBP; APLP-2;

 Tel: 1-631-559-9269 1-516-512-3133

 Email: info@creative-biomart.com  Fax: 1-631-938-8127

 45-1 Ramsey Road, Shirley, NY 11967, USA

Gene ID 334

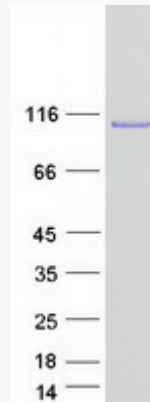
mRNA Refseq [NM_001142277](#)

Protein Refseq [NP_001135749](#)

MIM 104776

UniProt ID [Q06481](#)

SDS-PAGE



 Tel: 1-631-559-9269 1-516-512-3133

 Email: info@creative-biomart.com  Fax: 1-631-938-8127

 45-1 Ramsey Road, Shirley, NY 11967, USA