

## Recombinant Human APLP2 Protein, His-tagged

**Cat. No.** APLP2-395H    **Lot. No.** (See product label)

### SPECIFICATION

|                         |  |
|-------------------------|--|
| <b>Product Overview</b> | Recombinant Human APLP2(Met1~Gly210) fused with His tag at N-terminal was expressed in E. coli.  |
| <b>Species</b>          | Human  |
| <b>Source</b>           | E.coli   |
| <b>ProteinLength</b>    | Met1~Gly210  |
| <b>Description</b>      | This gene encodes amyloid precursor- like protein 2 (APLP2), which is a member of the APP (amyloid precursor protein) family including APP, APLP1 and APLP2. This protein is ubiquitously expressed. It contains heparin-, copper- and zinc- binding domains at the N-terminus, BPTI/Kunitz inhibitor and E2 domains in the middle region, and transmembrane and intracellular domains at the C-terminus. This protein interacts with major histocompatibility complex (MHC) class I molecules. The synergy of this protein and the APP is required to mediate neuromuscular transmission, spatial learning and synaptic plasticity. This protein has been implicated in the pathogenesis of Alzheimer's disease. Multiple alternatively spliced transcript variants encoding different isoforms have been identified. |
| <b>Form</b>             | PBS, pH7.4, containing 0.01% SKL, 1mM DTT, 5% Trehalose and Proclin300.  |
| <b>Molecular Mass</b>   | 27.0kDa  |
| <b>Endotoxin</b>        | <1.0EU per 1g (determined by the LAL method)   |

 Tel: 1-631-559-9269    1-516-512-3133

 Email: [info@creative-biomart.com](mailto:info@creative-biomart.com)     Fax: 1-631-938-8127

 45-1 Ramsey Road, Shirley, NY 11967, USA

|                       |  |
|-----------------------|--|
| <b>Purity</b>         | > 95%  |
| <b>Applications</b>   | Positive Control; Immunogen; SDS-PAGE; WB.<br>If bio-activity of the protein is needed, please check active protein.   |
| <b>Stability</b>      | The thermal stability is described by the loss rate. The loss rate was determined by accelerated thermal degradation test, that is, incubate the protein at 37 centigrade for 48h, and no obvious degradation and precipitation were observed. The loss rate is less than 5% within the expiration date under appropriate storage condition. |
| <b>Storage</b>        | Avoid repeated freeze/thaw cycles. Store at 2-8 centigrade for one month. Aliquot and store at -80 centigrade for 12 months.   |
| <b>Reconstitution</b> | Reconstitute in PBS or others.   |

## GENE INFORMATION

|                        |   |
|------------------------|---|
| <b>Gene Name</b>       | <a href="#">APLP2 amyloid beta (A4) precursor-like protein 2 [ Homo sapiens ]</a>   |
| <b>Official Symbol</b> | <a href="#">APLP2</a>   |
| <b>Synonyms</b>        | APLP2; amyloid beta (A4) precursor-like protein 2; APPL2; amyloid-like protein 2; APPH; CDEI box-binding protein; amyloid precursor protein homolog HSD-2; CDEBP; APLP-2; |
| <b>Gene ID</b>         | <a href="#">334</a>   |
| <b>mRNA Refseq</b>     | <a href="#">NM_001142276</a>  |
| <b>Protein Refseq</b>  | <a href="#">NP_001135748</a>  |

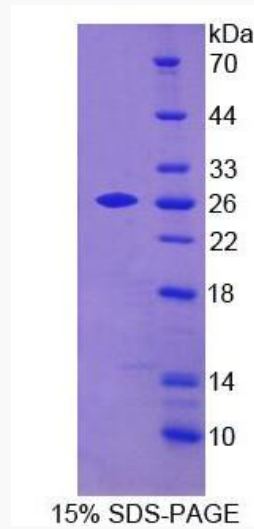
 Tel: 1-631-559-9269 1-516-512-3133

 Email: [info@creative-biomart.com](mailto:info@creative-biomart.com)  Fax: 1-631-938-8127

 45-1 Ramsey Road, Shirley, NY 11967, USA

MIM 104776

UniProt ID Q06481



 Tel: 1-631-559-9269 1-516-512-3133

 Email: [info@creative-biomart.com](mailto:info@creative-biomart.com)  Fax: 1-631-938-8127

 45-1 Ramsey Road, Shirley, NY 11967, USA