

## Recombinant Human APLP2 protein, GST-tagged

**Cat. No.** APLP2-688H    **Lot. No.** (See product label)

### SPECIFICATION

<b>Product Overview</b>	Human APLP2 full-length ORF ( AAH04371.1, 1 a.a. - 522 a.a.) recombinant protein with GST-tag at N-terminal.
<b>Species</b>	Human
<b>Source</b>	Wheat Germ
<b>Description</b>	This gene encodes amyloid precursor- like protein 2 (APLP2), which is a member of the APP (amyloid precursor protein) family including APP, APLP1 and APLP2. This protein is ubiquitously expressed. It contains heparin-, copper- and zinc- binding domains at the N-terminus, BPTI/Kunitz inhibitor and E2 domains in the middle region, and transmembrane and intracellular domains at the C-terminus. This protein interacts with major histocompatibility complex (MHC) class I molecules. The synergy of this protein and the APP is required to mediate neuromuscular transmission, spatial learning and synaptic plasticity. This protein has been implicated in the pathogenesis of Alzheimer's disease. Multiple alternatively spliced transcript variants encoding different isoforms have been identified. [provided by RefSeq, Aug 2011]
<b>Molecular Mass</b>	85.6 kDa
<b>AA Sequence</b>	MAATGTAAAAATGRLLLLLVGLTAPALALAGYIEALAANAGTGFVAEAPQIAMFCGK LNMHVNIQTGKWEPDPTGTKSCFETKEEVLQYCQEMYPELQITNVMEANQRVSI DNRDCKKQCKSRFVTPFKCLVPPTPLPTNDVDVYFETSADDNEHARFQKAKEQLEI RHRNRMDRVKKEWEEAELQAKNLPKAERQTLIQHFQAMVKALEKEAASEKQQLVE

 Tel: 1-631-559-9269    1-516-512-3133

 Email: [info@creative-biomart.com](mailto:info@creative-biomart.com)     Fax: 1-631-938-8127

 45-1 Ramsey Road, Shirley, NY 11967, USA

THLARVEAMLNDRRRMALENYLAALQSDPPRPHRILQALRRYVRAENKDRDLHTIRHY  
 QHVLAVDPEKAAQMKSQVMTHLHVIEERRNQTLSLLYKVPYVAQEIQEEIDELLQEQ  
 RADMDQFTASISETPVDVRVSSEEESEEIPPFHPPHPPALPENEGSGVGEQDGGGLIG  
 AEEKVINSKNKVDENMVIDETLDVKEMIFNAERVGGLEEEERESVGPLREDFSLSSSA  
 LIGLLVIAVAIATVIVISLVMLRKRQYGTISHGIVEVDPMLTPEERHLNKMQNHYENPT  
 YKYLEQMQI

**Applications**

Enzyme-linked Immunoabsorbent Assay; Western Blot (Recombinant protein);  
Antibody Production; Protein Array

**Notes**

Best use within three months from the date of receipt of this protein.

**Storage**

Store at -80 centigrade. Aliquot to avoid repeated freezing and thawing.

**Storage Buffer**

50 mM Tris-HCl, 10 mM reduced Glutathione, pH=8.0 in the elution buffer.

## GENE INFORMATION

**Gene Name**

APLP2 amyloid beta (A4) precursor-like protein 2 [ Homo sapiens ]

**Official Symbol**

APLP2

**Synonyms**

APLP2; amyloid beta (A4) precursor-like protein 2; APPL2; amyloid-like protein 2;  
APPH; CDEI box-binding protein; amyloid precursor protein homolog HSD-2; CDEBP;  
APLP-2;

**Gene ID**

334

**mRNA Refseq**

NM\_001142276

**Protein Refseq**

NP\_001135748

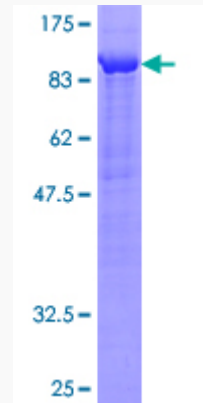
 Tel: 1-631-559-9269 1-516-512-3133

 Email: [info@creative-biomart.com](mailto:info@creative-biomart.com)  Fax: 1-631-938-8127

 45-1 Ramsey Road, Shirley, NY 11967, USA

MIM 104776

UniProt ID Q06481



12.5% SDS-PAGE Stained with Coomassie Blue

Tel: 1-631-559-9269 1-516-512-3133

Email: [info@creative-biomart.com](mailto:info@creative-biomart.com) Fax: 1-631-938-8127

45-1 Ramsey Road, Shirley, NY 11967, USA