

Recombinant Human APOA1BP protein, GST-tagged

Cat. No. APOA1BP-690H Lot. No. (See product label)

SPECIFICATION

Product Overview	Human APOA1BP full-length ORF (AAI00933.1, 1 a.a. - 185 a.a.) recombinant protein with GST-tag at N-terminal.
Species	Human
Source	Wheat Germ
Description	The product of this gene interacts with apolipoprotein A-I (apoA-I), the major apolipoprotein of high-density lipoproteins (HDLs). It is secreted into some bodily fluids, and its synthesis and secretion are stimulated in vitro by incubating cells with apoA-I. The human genome contains related pseudogenes. [provided by RefSeq, Jul 2008]
Molecular Mass	46.8 kDa
AA Sequence	MSRSPPTVLVICGPGNNGDGLVLCARHLKLFGEPTIYYPKRPNKPLFTALVTQCQK MDIPFLGEMPAEPMTIDELYELVVDAIFGFSFKGDVREPFHSILSVLKGLTVPIASIDIP SGWDVEKGNAGGIQPDLLISLTAPKKSATQFTGRYHYLGGRFVPPALEKKYQLNLPP YPDTECVYRLQ
Applications	Enzyme-linked Immunoabsorbent Assay; Western Blot (Recombinant protein); Antibody Production; Protein Array
Notes	Best use within three months from the date of receipt of this protein.

 Tel: 1-631-559-9269 1-516-512-3133

 Email: info@creative-biomart.com  Fax: 1-631-938-8127

 45-1 Ramsey Road, Shirley, NY 11967, USA

Storage Store at -80 centigrade. Aliquot to avoid repeated freezing and thawing.

Storage Buffer 50 mM Tris-HCl, 10 mM reduced Glutathione, pH=8.0 in the elution buffer.

GENE INFORMATION

Gene Name [APOA1BP apolipoprotein A-I binding protein \[Homo sapiens \]](#)

Official Symbol [APOA1BP](#)

Synonyms APOA1BP; apolipoprotein A-I binding protein; NAD(P)H-hydrate epimerase; AIBP; apoA I binding protein; MGC119143; MGC119144; MGC119145; YJEFN1; AI-BP; yjeF_N1; NAD(P)HX epimerase; apoA-I binding protein; apolipoprotein A-I-binding protein; yjeF N-terminal domain-containing protein 1;

Gene ID [128240](#)

mRNA Refseq [NM_144772](#)

Protein Refseq [NP_658985](#)

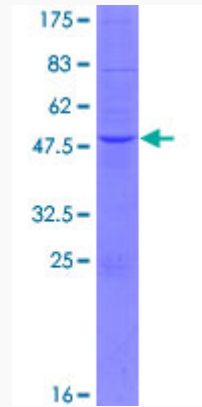
MIM [608862](#)

UniProt ID [Q8NCW5](#)

 Tel: 1-631-559-9269 1-516-512-3133

 Email: info@creative-biomart.com  Fax: 1-631-938-8127

 45-1 Ramsey Road, Shirley, NY 11967, USA



12.5% SDS-PAGE Stained with Coomassie Blue.

 Tel: 1-631-559-9269 1-516-512-3133

 Email: info@creative-biomart.com  Fax: 1-631-938-8127

 45-1 Ramsey Road, Shirley, NY 11967, USA