

Recombinant Cattle APOA4 protein, His & T7-tagged

Cat. No. APOA4-2036C Lot. No. (See product label)

SPECIFICATION

| | |
|-------------------------|---|
| Product Overview | Recombinant Cattle APOA4 aa. (Glu21~Gly380 (Accession # Q32PJ2)) fused with N-terminal His & T7 tag was produced in E. coli cells. |
| Species | Cattle |
| Source | E.coli |
| ProteinLength | Glu21~Gly380 |
| Form | Freeze-dried powder |
| Molecular Mass | Predicted Molecular Mass: 44.9kDa |
| Endotoxin | <1.0EU per 1ug (determined by the LAL method) |
| Purity | >95% |
| Characteristic | The isoelectric point is 5.8. |
| Applications | SDS-PAGE; WB; ELISA; IP. |
| Stability | The thermal stability is described by the loss rate of the target protein. The loss rate was determined by accelerated thermal degradation test, that is, incubate the protein at 37°C for 48h, and no obvious degradation and precipitation were observed. (Referring from China Biological Products Standard, which was calculated by the |

 Tel: 1-631-559-9269 1-516-512-3133

 Email: info@creative-biomart.com  Fax: 1-631-938-8127

 45-1 Ramsey Road, Shirley, NY 11967, USA

Arrhenius equation.) The loss of this protein is less than 5% within the expiration date under appropriate storage condition.

Storage

Avoid repeated freeze/thaw cycles. Store at 2-8°C for one month. Aliquot and store at -80°C for 12 months.

Storage Buffer

Supplied as lyophilized form in PBS, pH7.4, containing 5% trehalose, 0.01% sarcosyl.

Reconstitution

Reconstitute in sterile PBS, pH7.2-pH7.4.

GENE INFORMATION

Gene Name

[APOA4 apolipoprotein A4 \[Bos taurus \(cattle\) \]](#)

Official Symbol

[APOA4](#)

Synonyms

Abcb11; ATP-binding cassette, sub-family B (MDR/TAP), member 11; Bsep; PGY4; SPGP; ABC16; Lith1; PFIC2; bile salt export pump; ATP-binding cassette, sub-family B, member 11; sister of P-glycoprotein

Gene ID

[537301](#)

mRNA Refseq

[NM_001037480.1](#)

Protein Refseq

[NP_001032557.1](#)

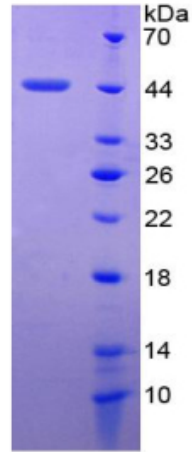
UniProt ID

[Q32PJ2](#)

 Tel: 1-631-559-9269 1-516-512-3133

 Email: info@creative-biomart.com  Fax: 1-631-938-8127

 45-1 Ramsey Road, Shirley, NY 11967, USA



15% SDS-PAGE

SDS-PAGE

Tel: 1-631-559-9269 1-516-512-3133

Email: info@creative-biomart.com Fax: 1-631-938-8127

45-1 Ramsey Road, Shirley, NY 11967, USA