

Recombinant Human APOBEC1 protein, GST-tagged

Cat. No. APOBEC1-695H Lot. No. (See product label)

SPECIFICATION

Product Overview	Human APOBEC1 partial ORF (NP_001635, 137 a.a. - 236 a.a.) recombinant protein with GST-tag at N-terminal.
Species	Human
Source	Wheat Germ
Description	This gene encodes a member of the cytidine deaminase enzyme family. The encoded protein forms a multiple-protein editing holoenzyme with APOBEC1 complementation factor (ACF) and APOBEC1 stimulating protein (ASP). This holoenzyme is involved in the editing of C-to-U nucleotide bases in apolipoprotein B and neurofibromatosis-1 mRNAs. Multiple transcript variants encoding different isoforms have been found for this gene. [provided by RefSeq, Feb 2015]
Molecular Mass	36.74 kDa
AA Sequence	SGVTIQIMRASEYYHCWRNFVNYPPGDEAHWPQYPPLWMMLYALELHCIIILSLPPCL KISRRWQNHLTFFRLHLQNCHYQTIPPHILLATGLIHPSVAWR
Applications	Enzyme-linked Immunoabsorbent Assay; Western Blot (Recombinant protein); Antibody Production; Protein Array
Notes	Best use within three months from the date of receipt of this protein.
Storage	Store at -80 centigrade. Aliquot to avoid repeated freezing and thawing.

 Tel: 1-631-559-9269 1-516-512-3133

 Email: info@creative-biomart.com  Fax: 1-631-938-8127

 45-1 Ramsey Road, Shirley, NY 11967, USA

Storage Buffer 50 mM Tris-HCl, 10 mM reduced Glutathione, pH=8.0 in the elution buffer.

GENE INFORMATION

Gene Name APOBEC1 apolipoprotein B mRNA editing enzyme, catalytic polypeptide 1 [Homo sapiens]

Official Symbol APOBEC1

Synonyms APOBEC1; apolipoprotein B mRNA editing enzyme, catalytic polypeptide 1; C->U-editing enzyme APOBEC-1; APOBEC 1; BEDP; CDAR1; HEPR; C-> U-editing enzyme APOBEC-1; apolipoprotein B mRNA-editing enzyme 1; apolipoprotein B mRNA editing enzyme complex-1; APOBEC-1;

Gene ID 339

mRNA Refseq NM_001644

Protein Refseq NP_001635

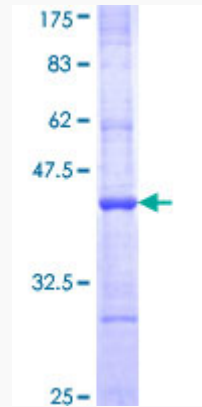
MIM 600130

UniProt ID P41238

 Tel: 1-631-559-9269 1-516-512-3133

 Email: info@creative-biomart.com  Fax: 1-631-938-8127

 45-1 Ramsey Road, Shirley, NY 11967, USA



12.5% SDS-PAGE Stained with Coomassie Blue.

 Tel: 1-631-559-9269 1-516-512-3133

 Email: info@creative-biomart.com  Fax: 1-631-938-8127

 45-1 Ramsey Road, Shirley, NY 11967, USA