

Recombinant Human APOBEC2 Protein, Myc/DDK-tagged, C13 and N15-labeled

Cat. No. APOBEC2-2366H **Lot. No.** (See product label)

SPECIFICATION

Product Overview	APOBEC2 MS Standard C13 and N15-labeled recombinant protein (NP_006780) with a C-terminal MYC/DDK tag, was expressed in HEK293 cells.
Species	Human
Source	HEK293
Description	Probable C to U editing enzyme whose physiological substrate is not yet known. Does not display detectable apoB mRNA editing. Has a low intrinsic cytidine deaminase activity. May play a role in the epigenetic regulation of gene expression through the process of active DNA demethylation.
Molecular Mass	25.5 kDa
AA Sequence	MAQKEEA AVATEAASQNGEDLENLDDPEK LKELI LPPFEIVTGERLPANFFKFQFR NVEYSSGRNK TFLCYVVEAQQGKGQVQASRGYLEDEHAAAHAEEAFFNTILPAFDP ALRYNVTWYVSSSPCAACADRIIKT LSKTKNLRL LILVGR LFMWEEPEIQ AALKKLKEA GCKLRIMKPQDFEYVWQNFVEQE EGESKAFQPWEDIQENFLYYEEKLADILKTRTR PLEQKLISEEDLAANDILDYKDDDDKV
Purity	> 80% as determined by SDS-PAGE and Coomassie blue staining
Stability	Stable for 3 months from receipt of products under proper storage and handling conditions.

 Tel: 1-631-559-9269 1-516-512-3133

 Email: info@creative-biomart.com  Fax: 1-631-938-8127

 45-1 Ramsey Road, Shirley, NY 11967, USA

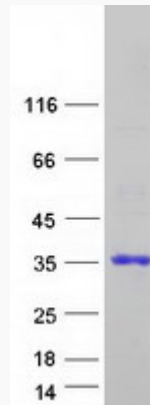
Storage	Store at -80 centigrade. Avoid repeated freeze-thaw cycles.
Concentration	50 µg/mL as determined by BCA
Storage Buffer	100 mM glycine, 25 mM Tris-HCl, pH 7.3.
GENE INFORMATION	
Gene Name	APOBEC2 apolipoprotein B mRNA editing enzyme catalytic subunit 2 [Homo sapiens (human)]
Official Symbol	APOBEC2
Synonyms	APOBEC2; apolipoprotein B mRNA editing enzyme, catalytic polypeptide-like 2; probable C->U-editing enzyme APOBEC-2; ARCD1; ARP1; probable C-> U-editing enzyme APOBEC-2; apolipoprotein B mRNA editing enzyme, catalytic polypeptide 2;
Gene ID	10930
mRNA Refseq	NM_006789
Protein Refseq	NP_006780
MIM	604797
UniProt ID	Q9Y235

 Tel: 1-631-559-9269 1-516-512-3133

 Email: info@creative-biomart.com  Fax: 1-631-938-8127

 45-1 Ramsey Road, Shirley, NY 11967, USA

SDS-PAGE



 Tel: 1-631-559-9269 1-516-512-3133

 Email: info@creative-biomart.com  Fax: 1-631-938-8127

 45-1 Ramsey Road, Shirley, NY 11967, USA