

Recombinant Human APOBEC2 protein, GST-tagged

Cat. No. APOBEC2-696H Lot. No. (See product label)

SPECIFICATION

Product Overview	Human APOBEC2 full-length ORF (NP_006780.1, 1 a.a. - 224 a.a.) recombinant protein with GST-tag at N-terminal.
Species	Human
Source	Wheat Germ
Description	APOBEC2 (Apolipoprotein B mRNA Editing Enzyme Catalytic Subunit 2) is a Protein Coding gene. Among its related pathways are mRNA Editing- C to U Conversion and Gene Expression. GO annotations related to this gene include RNA binding and cytidine deaminase activity. An important paralog of this gene is APOBEC3B.
Molecular Mass	52.1 kDa
AA Sequence	MAQKEEAAVATEAASQNGEDLENLDDPEKLELIEPPEIVTGERLPANFFKFQFR NVEYSSGRNKTFLCYVVEAQQGKGGQVQASRGYLEDEHAAAHAEEAFFNTILPAFDP ALRYNVTWYVSSSPCAACADRIIKTLSTKLNLRLLILVGRLFMWEEPEIQAALKKLKEA GCKLRIMKPQDFEYVWQNFVEQEESKAFQPWEDIQENFLYYEEKLADILK
Applications	Enzyme-linked Immunoabsorbent Assay; Western Blot (Recombinant protein); Antibody Production; Protein Array
Notes	Best use within three months from the date of receipt of this protein.
Storage	Store at -80 centigrade. Aliquot to avoid repeated freezing and thawing.

 Tel: 1-631-559-9269 1-516-512-3133

 Email: info@creative-biomart.com  Fax: 1-631-938-8127

 45-1 Ramsey Road, Shirley, NY 11967, USA

Storage Buffer 50 mM Tris-HCl, 10 mM reduced Glutathione, pH=8.0 in the elution buffer.

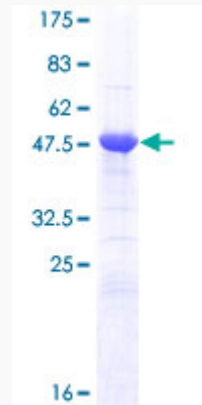
GENE INFORMATION

Gene Name	APOBEC2 apolipoprotein B mRNA editing enzyme, catalytic polypeptide-like 2 [Homo sapiens]
Official Symbol	APOBEC2
Synonyms	APOBEC2; apolipoprotein B mRNA editing enzyme, catalytic polypeptide-like 2; probable C->U-editing enzyme APOBEC-2; ARCD1; ARP1; probable C-> U-editing enzyme APOBEC-2; apolipoprotein B mRNA editing enzyme, catalytic polypeptide 2;
Gene ID	10930
mRNA Refseq	NM_006789
Protein Refseq	NP_006780
MIM	604797
UniProt ID	Q9Y235

 Tel: 1-631-559-9269 1-516-512-3133

 Email: info@creative-biomart.com  Fax: 1-631-938-8127

 45-1 Ramsey Road, Shirley, NY 11967, USA



12.5% SDS-PAGE Stained with Coomassie Blue.

 Tel: 1-631-559-9269 1-516-512-3133

 Email: info@creative-biomart.com  Fax: 1-631-938-8127

 45-1 Ramsey Road, Shirley, NY 11967, USA