

## Recombinant Human APOBEC3A protein, His-tagged

Cat. No. APOBEC3A-3111H Lot. No. (See product label)

### SPECIFICATION

<b>Product Overview</b>	Recombinant Human APOBEC3A protein(P31941)(1-199aa), fused with C-terminal His tag, was expressed in Yeast.
<b>Species</b>	Human
<b>Source</b>	Yeast
<b>ProteinLength</b>	1-199aa
<b>Form</b>	If the delivery form is liquid, the default storage buffer is Tris/PBS-based buffer, 5%-50% glycerol. If the delivery form is lyophilized powder, the buffer before lyophilization is Tris/PBS-based buffer, 6% Trehalose, pH 8.0.
<b>Molecular Mass</b>	24.5 kDa
<b>Purity</b>	Greater than 90% as determined by SDS-PAGE.
<b>Storage</b>	Store at -20°C/-80°C upon receipt, aliquoting is necessary for mutiple use. Avoid repeated freeze-thaw cycles.
<b>Reconstitution</b>	We recommend that this vial be briefly centrifuged prior to opening to bring the contents to the bottom. Please reconstitute protein in deionized sterile water to a concentration of 0.1-1.0 mg/mL. We recommend to add 5-50% of glycerol (final concentration) and aliquot for long-term storage at -20°C/-80°C.

 Tel: 1-631-559-9269 1-516-512-3133

 Email: [info@creative-biomart.com](mailto:info@creative-biomart.com)  Fax: 1-631-938-8127

 45-1 Ramsey Road, Shirley, NY 11967, USA



**AA Sequence**

MEASPASGPRHLMDPHIFTSNFNNGIGRHKTYLCYEVEERLDNGTSVKMDQHRGFLH  
NQAKNLLCGFYGRHAELRFLDLVPSLQLDPAQIYRVTFISWSPCFSWGCAGEVRA  
FLQENTHVRLRIFAARIYDYDPLYKEALQMLRDAGAQVSIMTYDEFKHCWDTFVDHQ  
GCPFQPWDGLDEHSQALSGRLRAILQNQGN

**GENE INFORMATION**

**Gene Name**

APOBEC3A apolipoprotein B mRNA editing enzyme, catalytic polypeptide-like 3A [ Homo sapiens ]

**Official Symbol**

APOBEC3A

**Synonyms**

APOBEC3A; apolipoprotein B mRNA editing enzyme, catalytic polypeptide-like 3A; ARP3; phorbolin I; PHRBN;

**Gene ID**

140561

**MIM**

607109

**UniProt ID**

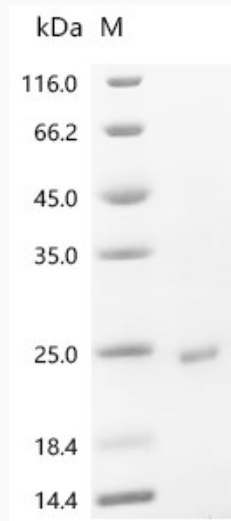
P31941

Tel: 1-631-559-9269 1-516-512-3133

Email: [info@creative-biomart.com](mailto:info@creative-biomart.com) Fax: 1-631-938-8127

45-1 Ramsey Road, Shirley, NY 11967, USA

**SDS-PAGE**



 Tel: 1-631-559-9269 1-516-512-3133

 Email: [info@creative-biomart.com](mailto:info@creative-biomart.com)  Fax: 1-631-938-8127

 45-1 Ramsey Road, Shirley, NY 11967, USA