

Recombinant Human APOBEC3B protein, GST-tagged

Cat. No. APOBEC3B-697H Lot. No. (See product label)

SPECIFICATION

Product Overview Human APOBEC3B full-length ORF (AAH53859.1, 1 a.a. - 251 a.a.) recombinant protein with GST-tag at N-terminal.

Species Human

Source Wheat Germ

Description This gene is a member of the cytidine deaminase gene family. It is one of seven related genes or pseudogenes found in a cluster, thought to result from gene duplication, on chromosome 22. Members of the cluster encode proteins that are structurally and functionally related to the C to U RNA-editing cytidine deaminase APOBEC1. It is thought that the proteins may be RNA editing enzymes and have roles in growth or cell cycle control. A hybrid gene results from the deletion of approximately 29.5 kb of sequence between this gene, APOBEC3B, and the adjacent gene APOBEC3A. The breakpoints of the deletion are within the two genes, so the deletion allele is predicted to have the promoter and coding region of APOBEC3A, but the 3' UTR of APOBEC3B. Two transcript variants encoding different isoforms have been found for this gene. [provided by RefSeq, Jul 2012]

Molecular Mass 56.2 kDa

AA Sequence MNPQIRNPMERMYRDTFYDNFENEPILYGRSYTWLCYEVKIKRGRSNLLWDTGVFR
GQVYFEPQYHAEMCFLSWFCGNQLPAYKCFQITWVFSWTPCPDCVAKLAEFLSEH
PNVTLTISAARLYYYWERDYRRALCRLSQAGARVKIMDYEEFAYCWENFVYNEGQQ

 Tel: 1-631-559-9269 1-516-512-3133

 Email: info@creative-biomart.com  Fax: 1-631-938-8127

 45-1 Ramsey Road, Shirley, NY 11967, USA

FMPWYKFDENYAFLHRTLKEILRLRIFSVAF TAAMRSCASWTWFL LCSWTRPRSTG
SLGSSPGAPASPGAVPGKCVRSFRRTHT

Applications

Enzyme-linked Immunoabsorbent Assay; Western Blot (Recombinant protein);
Antibody Production; Protein Array

Notes

Best use within three months from the date of receipt of this protein.

Storage

Store at -80 centigrade. Aliquot to avoid repeated freezing and thawing.

Storage Buffer

50 mM Tris-HCl, 10 mM reduced Glutathione, pH=8.0 in the elution buffer.

GENE INFORMATION

Gene Name

[APOBEC3B apolipoprotein B mRNA editing enzyme, catalytic polypeptide-like 3B \[Homo sapiens \]](#)

Official Symbol

[APOBEC3B](#)

Synonyms

APOBEC3B; apolipoprotein B mRNA editing enzyme, catalytic polypeptide-like 3B; probable DNA dC->dU-editing enzyme APOBEC-3B; FLJ21201; phorbolin 3; PHRBNL; probable DNA dC-> dU-editing enzyme APOBEC-3B; phorbolin 2; phorbolin-2/3; cytidine deaminase; phorbolin-1-related protein; ARP4; ARCD3; APOBEC1L; bK150C2.2; DJ742C19.2;

Gene ID

[9582](#)

mRNA Refseq

[NM_004900](#)

Protein Refseq

[NP_004891](#)

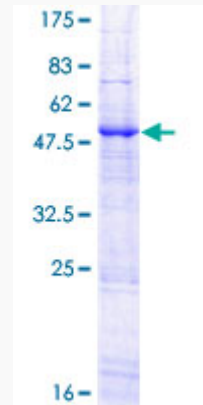
 Tel: 1-631-559-9269 1-516-512-3133

 Email: info@creative-biomart.com  Fax: 1-631-938-8127

 45-1 Ramsey Road, Shirley, NY 11967, USA

MIM 607110

UniProt ID Q9UH17



12.5% SDS-PAGE Stained with Coomassie Blue.

Tel: 1-631-559-9269 1-516-512-3133

Email: info@creative-biomart.com Fax: 1-631-938-8127

45-1 Ramsey Road, Shirley, NY 11967, USA