

## Recombinant Human APOBEC3C Protein, Myc/DDK-tagged, C13 and N15-labeled

**Cat. No.** APOBEC3C-3367H    **Lot. No.** (See product label)

### SPECIFICATION

|                         |   |
|-------------------------|---|
| <b>Product Overview</b> | APOBEC3C MS Standard C13 and N15-labeled recombinant protein (NP_055323) with a C-terminal MYC/DDK tag, was expressed in HEK293 cells.  |
| <b>Species</b>          | Human   |
| <b>Source</b>           | HEK293  |
| <b>Description</b>      | This gene is a member of the cytidine deaminase gene family. It is one of seven related genes or pseudogenes found in a cluster thought to result from gene duplication, on chromosome 22. Members of the cluster encode proteins that are structurally and functionally related to the C to U RNA-editing cytidine deaminase APOBEC1. It is thought that the proteins may be RNA editing enzymes and have roles in growth or cell cycle control. |
| <b>Molecular Mass</b>   | 22.8 kDa  |
| <b>AA Sequence</b>      | MNPQIRNPMKAMYPGTFYFQFKNLWEANDRDETWLCFTVEGIKRRSVVSWKTGVF<br>RNQVDSETHCHAERCFLSWFCDDILSPNTKYQVTWYTSWSPCPDCAGEVAEFLAR<br>HSNVNLTIFTARLYYFYQPCYQEGLRSLSQEGVAVEIMDYEDFKYCWENFVYNDNE<br>PFKPWKGLKTNFRLLKRRLRESLQTRTRPLEQKLISEEDLAANDILDYKDDDDKV   |
| <b>Purity</b>           | > 80% as determined by SDS-PAGE and Coomassie blue staining   |
| <b>Stability</b>        | Stable for 3 months from receipt of products under proper storage and handling  |

 Tel: 1-631-559-9269    1-516-512-3133

 Email: [info@creative-biomart.com](mailto:info@creative-biomart.com)     Fax: 1-631-938-8127

 45-1 Ramsey Road, Shirley, NY 11967, USA

conditions.

**Storage** Store at -80 centigrade. Avoid repeated freeze-thaw cycles.

**Concentration** 50 µg/mL as determined by BCA

**Storage Buffer** 100 mM glycine, 25 mM Tris-HCl, pH 7.3.

## GENE INFORMATION

**Gene Name** APOBEC3C apolipoprotein B mRNA editing enzyme catalytic subunit 3C [ Homo sapiens (human) ]

**Official Symbol** APOBEC3C

**Synonyms** APOBEC3C; apolipoprotein B mRNA editing enzyme, catalytic polypeptide-like 3C; probable DNA dC->dU-editing enzyme APOBEC-3C; APOBEC1L; ARDC2; ARDC4; ARP5; bK150C2.3; PBI; probable DNA dC-> dU-editing enzyme APOBEC-3C; phorbolin I; A3C; FLJ37251; MGC19485;

**Gene ID** 27350

**mRNA Refseq** NM\_014508

**Protein Refseq** NP\_055323

**MIM** 607750

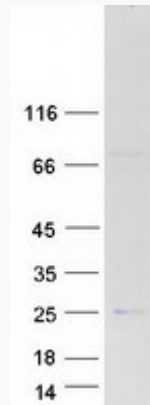
**UniProt ID** Q9NRW3

 Tel: 1-631-559-9269 1-516-512-3133

 Email: [info@creative-biomart.com](mailto:info@creative-biomart.com)  Fax: 1-631-938-8127

 45-1 Ramsey Road, Shirley, NY 11967, USA

**SDS-PAGE**



 Tel: 1-631-559-9269 1-516-512-3133

 Email: [info@creative-biomart.com](mailto:info@creative-biomart.com)  Fax: 1-631-938-8127

 45-1 Ramsey Road, Shirley, NY 11967, USA