

## Recombinant Human APOBEC3C protein, GST-tagged

**Cat. No.** APOBEC3C-698H    **Lot. No.** (See product label)

### SPECIFICATION

<b>Product Overview</b>	Human APOBEC3C full-length ORF ( NP_055323.2, 1 a.a. - 190 a.a.) recombinant protein with GST-tag at N-terminal.
<b>Species</b>	Human
<b>Source</b>	Wheat Germ
<b>Description</b>	This gene is a member of the cytidine deaminase gene family. It is one of seven related genes or pseudogenes found in a cluster thought to result from gene duplication, on chromosome 22. Members of the cluster encode proteins that are structurally and functionally related to the C to U RNA-editing cytidine deaminase APOBEC1. It is thought that the proteins may be RNA editing enzymes and have roles in growth or cell cycle control. [provided by RefSeq, Jul 2008]
<b>Molecular Mass</b>	49.2 kDa
<b>AA Sequence</b>	MNPQIRNPMKAMYPGTFYFQFKNLWEANDRNETWLCFTVEGIKRRSVVSWKTGVF RNQVDSETHCHAERCFLSWFCDDILSPNTKYQVTWYTSWSPCPDCAGEVAEFLAR HSNVNLTIFTARLYYFYQPCYQEGLRSLSQEGVAVEIMDYEDFKYCWENFVYNDNE PFKPWKGLKTNFRLKRRRLRESLQ
<b>Applications</b>	Enzyme-linked Immunoabsorbent Assay; Western Blot (Recombinant protein); Antibody Production; Protein Array
<b>Notes</b>	Best use within three months from the date of receipt of this protein.

 Tel: 1-631-559-9269    1-516-512-3133

 Email: [info@creative-biomart.com](mailto:info@creative-biomart.com)     Fax: 1-631-938-8127

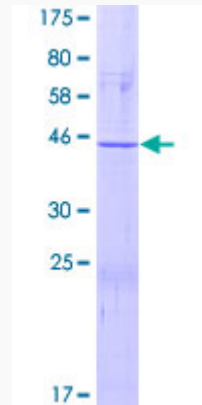
 45-1 Ramsey Road, Shirley, NY 11967, USA

<b>Storage</b>	Store at -80 centigrade. Aliquot to avoid repeated freezing and thawing.
<b>Storage Buffer</b>	50 mM Tris-HCl, 10 mM reduced Glutathione, pH=8.0 in the elution buffer.
<b>GENE INFORMATION</b>	
<b>Gene Name</b>	APOBEC3C apolipoprotein B mRNA editing enzyme, catalytic polypeptide-like 3C [ Homo sapiens ]
<b>Official Symbol</b>	APOBEC3C
<b>Synonyms</b>	APOBEC3C; apolipoprotein B mRNA editing enzyme, catalytic polypeptide-like 3C; probable DNA dC->dU-editing enzyme APOBEC-3C; APOBEC1L; ARDC2; ARDC4; ARP5; bK150C2.3; PBI; probable DNA dC-> dU-editing enzyme APOBEC-3C; phorbolin I; A3C; FLJ37251; MGC19485;
<b>Gene ID</b>	27350
<b>mRNA Refseq</b>	NM_014508
<b>Protein Refseq</b>	NP_055323
<b>MIM</b>	607750
<b>UniProt ID</b>	Q9NRW3

 Tel: 1-631-559-9269 1-516-512-3133

 Email: [info@creative-biomart.com](mailto:info@creative-biomart.com)  Fax: 1-631-938-8127

 45-1 Ramsey Road, Shirley, NY 11967, USA



12.5% SDS-PAGE Stained with Coomassie Blue.

Tel: 1-631-559-9269 1-516-512-3133

Email: [info@creative-biomart.com](mailto:info@creative-biomart.com) Fax: 1-631-938-8127

45-1 Ramsey Road, Shirley, NY 11967, USA