

Recombinant Human APOBEC3G protein, GST-tagged

Cat. No. APOBEC3G-701H **Lot. No.** (See product label)

SPECIFICATION

Product Overview	Human APOBEC3G full-length ORF (AAH24268.1, 1 a.a. - 384 a.a.) recombinant protein with GST-tag at N-terminal.
Species	Human
Source	Wheat Germ
Description	This gene is a member of the cytidine deaminase gene family. It is one of seven related genes or pseudogenes found in a cluster, thought to result from gene duplication, on chromosome 22. Members of the cluster encode proteins that are structurally and functionally related to the C to U RNA-editing cytidine deaminase APOBEC1. The protein encoded by this gene catalyzes site-specific deamination of both RNA and single-stranded DNA. The encoded protein has been found to be a specific inhibitor of human immunodeficiency virus-1 (HIV-1) infectivity. [provided by RefSeq, Mar 2017]
Molecular Mass	72.8 kDa
AA Sequence	MKPHFRNTVERMYRDTFSYNFYNRPILSRRTNVWLCYEVKTKGPSRPPLDAKIFRG QVYSELKYHPEMRFFHWFSKWRKLRDQEYVETWYISWSPCTKCTRDMATFLAED PKVTLTIFVARLYYFWDPDYQEALRSLCQKRDGPRATMKIMNYDEFQHCWSKFVYS QRELFEPWNNLPKYIILLHIMLGEILRHSMDPPTFTFNFNNEPWVRGRHETLYLCYEV ERMHNDTWVLLNQRRGFLCNQAPHKHGFLEGRHAELCFLDVIPFWKLDLDQDYRV TCFTSWSPCFSCAQEMAKFISKNKHVSLCIFTARIYDDQGRCQEGLRTLAEAGAKISI

 Tel: 1-631-559-9269 1-516-512-3133

 Email: info@creative-biomart.com  Fax: 1-631-938-8127

 45-1 Ramsey Road, Shirley, NY 11967, USA

MTYSEFKHCWDTFVDHQGCPFQPWDGLDEHSQDLSGRLRAILQNQEN

Applications

Enzyme-linked Immunoabsorbent Assay; Western Blot (Recombinant protein); Antibody Production; Protein Array

Notes

Best use within three months from the date of receipt of this protein.

Storage

Store at -80 centigrade. Aliquot to avoid repeated freezing and thawing.

Storage Buffer

50 mM Tris-HCl, 10 mM reduced Glutathione, pH=8.0 in the elution buffer.

GENE INFORMATION

Gene Name

[APOBEC3G apolipoprotein B mRNA editing enzyme, catalytic polypeptide-like 3G \[Homo sapiens \]](#)

Official Symbol

[APOBEC3G](#)

Synonyms

APOBEC3G; apolipoprotein B mRNA editing enzyme, catalytic polypeptide-like 3G; DNA dC->dU-editing enzyme APOBEC-3G; bK150C2.7; CEM15; dJ494G10.1; FLJ12740; MDS019; DNA dC-> dU-editing enzyme APOBEC-3G; APOBEC-related protein 9; dU editing enzyme; phorbolin-like protein MDS019; APOBEC-related cytidine deaminase; apolipoprotein B mRNA editing enzyme cytidine deaminase; ARCD; ARP9; ARP-9; CEM-15;

Gene ID

[60489](#)

mRNA Refseq

[NM_021822](#)

Protein Refseq

[NP_068594](#)

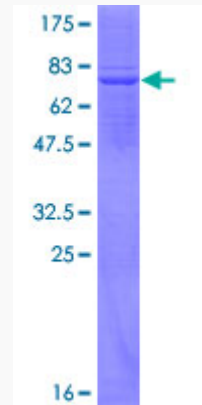
 Tel: 1-631-559-9269 1-516-512-3133

 Email: info@creative-biomart.com  Fax: 1-631-938-8127

 45-1 Ramsey Road, Shirley, NY 11967, USA

MIM 607113

UniProt ID Q9HC16



12.5% SDS-PAGE Stained with Coomassie Blue.

 Tel: 1-631-559-9269 1-516-512-3133

 Email: info@creative-biomart.com  Fax: 1-631-938-8127

 45-1 Ramsey Road, Shirley, NY 11967, USA