

Recombinant Human APOBEC3H protein, GST-tagged

Cat. No. APOBEC3H-702H **Lot. No.** (See product label)

SPECIFICATION

Product Overview	Human APOBEC3H full-length ORF (AAH69023.1, 1 a.a. - 182 a.a.) recombinant protein with GST-tag at N-terminal.
Species	Human
Source	Wheat Germ
Description	<p>This gene encodes a member of the apolipoprotein B mRNA-editing enzyme catalytic polypeptide 3 family of proteins. The encoded protein is a cytidine deaminase that has antiretroviral activity by generating lethal hypermutations in viral genomes.</p> <p>Polymorphisms and alternative splicing in this gene influence its antiretroviral activity and are associated with increased resistance to human immunodeficiency virus type 1 infection in certain populations. Alternative splicing results in multiple transcript variants.[provided by RefSeq, Oct 2009]</p>
Molecular Mass	47.9 kDa
AA Sequence	<p>MALLTAETFRLQFNKRRLRPYYPRKALLCYQLTPQNGSTPTRGYFENKKKCHAEI CFINEIKSMGLDETQCYQVTCYLTWSPCSSCAWELVDFIKAHDHLNLGIFASRLYYH WCKPQQKGLRLLCGSQVPVEVMGFPEFADCWENFVDHEKPLSFNPYKMLEELDKN SRAIKRRLERIKS</p>
Applications	Enzyme-linked Immunoabsorbent Assay; Western Blot (Recombinant protein); Antibody Production; Protein Array

 Tel: 1-631-559-9269 1-516-512-3133

 Email: info@creative-biomart.com  Fax: 1-631-938-8127

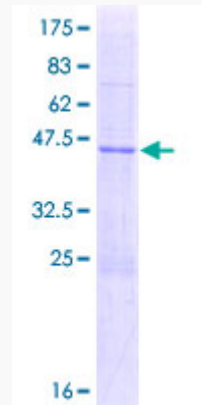
 45-1 Ramsey Road, Shirley, NY 11967, USA

Notes	Best use within three months from the date of receipt of this protein.
Storage	Store at -80 centigrade. Aliquot to avoid repeated freezing and thawing.
Storage Buffer	50 mM Tris-HCl, 10 mM reduced Glutathione, pH=8.0 in the elution buffer.
GENE INFORMATION	
Gene Name	APOBEC3H apolipoprotein B mRNA editing enzyme, catalytic polypeptide-like 3H [Homo sapiens]
Official Symbol	APOBEC3H
Synonyms	APOBEC3H; apolipoprotein B mRNA editing enzyme, catalytic polypeptide-like 3H; DNA dC->dU-editing enzyme APOBEC-3H; ARP10; DNA dC-> dU-editing enzyme APOBEC-3H; ARP-10; APOBEC-related protein 10; apolipoprotein B mRNA-editing enzyme catalytic polypeptide-like 3H;
Gene ID	164668
mRNA Refseq	NM_001166002
Protein Refseq	NP_001159474
MIM	610976
UniProt ID	Q6NTF7

 Tel: 1-631-559-9269 1-516-512-3133

 Email: info@creative-biomart.com  Fax: 1-631-938-8127

 45-1 Ramsey Road, Shirley, NY 11967, USA



12.5% SDS-PAGE Stained with Coomassie Blue.

 Tel: 1-631-559-9269 1-516-512-3133

 Email: info@creative-biomart.com  Fax: 1-631-938-8127

 45-1 Ramsey Road, Shirley, NY 11967, USA