

Recombinant Human APOE Protein, His-tagged

Cat. No. APOE-17H Lot. No. (See product label)

SPECIFICATION

Product Overview	Recombinant human APOE protein with a His-tag was expressed in HEK293
Species	Human
Source	HEK293
Description	The protein encoded by this gene is a major apoprotein of the chylomicron. It binds to a specific liver and peripheral cell receptor, and is essential for the normal catabolism of triglyceride-rich lipoprotein constituents. This gene maps to chromosome 19 in a cluster with the related apolipoprotein C1 and C2 genes. Mutations in this gene result in familial dysbetalipoproteinemia, or type III hyperlipoproteinemia (HLP III), in which increased plasma cholesterol and triglycerides are the consequence of impaired clearance of chylomicron and VLDL remnants.
Molecular Mass	The protein has a calculated MW of 35 kDa.
AA Sequence	KVEQAVETEPEPELRQQTEWQSGQRWELALGRFWDYLRWVQTLSEQVQEELLSS QVTQELRALMDETMKELKAYKSELEEQLTPVAEETRARLSKELQAAQARLGADMED VCGRLVQYRGEVQAMLGQSTEELRVRLASHLRKLRKLLRDADDLQKRLAVYQAG AREGAERGLSAIRERLGPLVEQGRVRAATVGSLAGQPLQERAQAWGERLRARMEE MGSRTDRDLDEVKEQVAEVRAKLEEQAQQIRLQAEAFQARLKSWEPLVEDMQRQ WAGLVEKVQAAVGTSAAPVPSDNHVDHHHHHH
Endotoxin	<1 EU/μg

 Tel: 1-631-559-9269 1-516-512-3133

 Email: info@creative-biomart.com  Fax: 1-631-938-8127

 45-1 Ramsey Road, Shirley, NY 11967, USA

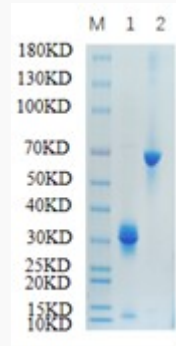
Purity	>95% by SDS-PAGE
Storage	Store it under sterile conditions at -20 to -80 centigrade. It is recommended that the protein be aliquoted for optimal storage. Avoid repeated freeze-thaw cycles.
Storage Buffer	Lyophilized from a 0.2 µm filtered solution of PBS,pH7.4, 5% trehalose, 5% manitol
GENE INFORMATION	
Gene Name	APOE apolipoprotein E [Homo sapiens (human)]
Official Symbol	APOE
Synonyms	APOE; apolipoprotein E; AD2, Alzheimer disease 2 (APOE*E4 associated, late onset); apo-E; apolipoprotein E3; AD2; LPG; LDLQC5; MGC1571;
Gene ID	348
mRNA Refseq	NM_000041
Protein Refseq	NP_000032
MIM	107741
UniProt ID	P02649

 Tel: 1-631-559-9269 1-516-512-3133

 Email: info@creative-biomart.com  Fax: 1-631-938-8127

 45-1 Ramsey Road, Shirley, NY 11967, USA

SDS-PAGE:



Reducing 12% SDS-PAGE analysis profile of purified APOE

1. APOE
2. BSA

 Tel: 1-631-559-9269 1-516-512-3133

 Email: info@creative-biomart.com  Fax: 1-631-938-8127

 45-1 Ramsey Road, Shirley, NY 11967, USA