

Recombinant Human APOE protein, His-tagged, Biotinylated(Primary Amine Labeling)

Cat. No. APOE-4674H Lot. No. (See product label)

SPECIFICATION

Product Overview	Biotinylated Recombinant Human APOE protein(P02649-1)(Lys19-His317)(Primary Amine Labeling), fused with N-terminal His tag, was expressed in HEK293.
Species	Human
Source	HEK293
ProteinLength	Lys19-His317
Tag	N-His
Conjugation/Label	Biotin; Primary Amine
Form	Supplied as 0.22µm filtered solution in PBS (pH 7.4).
Bio-activity	Human TREM2, hFc Tag captured on CM5 Chip via Protein A can bind Biotinylated Human APOE3, His Tag with an affinity constant of 1.41 µM as determined in SPR assay (Biacore T200).
Molecular Mass	The protein has a predicted MW of 35.3 kDa. Due to glycosylation, the protein migrates to 35-45 kDa based on Tris-Bis PAGE result.
Endotoxin	Less than 1EU per µg by the LAL method.

 Tel: 1-631-559-9269 1-516-512-3133

 Email: info@creative-biomart.com  Fax: 1-631-938-8127

 45-1 Ramsey Road, Shirley, NY 11967, USA

Purity	> 95% as determined by Tris-Bis PAGE
Storage	Valid for 12 months from date of receipt when stored at -80°C; Recommend to aliquot the protein into smaller quantities for optimal storage. Please do not repeated freeze-thaw cycles.
Reconstitution	It is recommended that sterile water be added to the vial to prepare a stock solution of 0.2 ug/ul. Centrifuge the vial at 4°C before opening to recover the entire contents.
Conjugation	Biotin

GENE INFORMATION

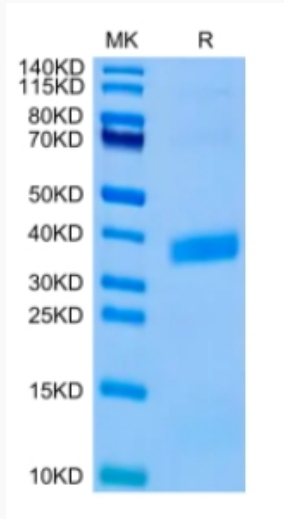
Gene Name	APOE apolipoprotein E [Homo sapiens]
Official Symbol	APOE
Synonyms	APOE; apolipoprotein E; AD2, Alzheimer disease 2 (APOE*E4 associated, late onset); apo-E; apolipoprotein E3; AD2; LPG; LDLQC5; MGC1571;
Gene ID	348
mRNA Refseq	NM_000041
Protein Refseq	NP_000032
UniProt ID	P02649

 Tel: 1-631-559-9269 1-516-512-3133

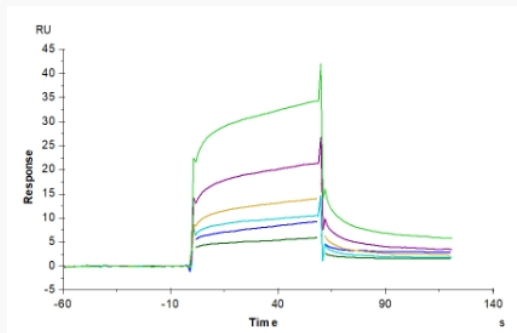
 Email: info@creative-biomart.com  Fax: 1-631-938-8127

 45-1 Ramsey Road, Shirley, NY 11967, USA

Tris-Bis PAGE



SPR Data



 Tel: 1-631-559-9269 1-516-512-3133

 Email: info@creative-biomart.com  Fax: 1-631-938-8127

 45-1 Ramsey Road, Shirley, NY 11967, USA