

Recombinant Human APOE Protein, His-tagged

Cat. No. APOE-56H **Lot. No.** (See product label)

SPECIFICATION

Product Overview	Recombinant Human Apolipoprotein E is produced by our Mammalian expression system and the target gene encoding Lys19---His317 is expressed with a 6His tag at the C-terminus.
Species	Human
Source	HEK293
Description	Apolipoprotein E (ApoE) is a glycoprotein that mainly functions in lipoprotein-mediated lipid transport between organs via the plasma and interstitial fluids. ApoE can be synthesized by the liver and intestinally synthesized chylomicrons. ApoE mediates high-affinity binding of chylomicrons and very low density lipoprotein (VLDL) particles to the LDL receptor, allowing for specific uptake of these particles by the liver, preventing the accumulation of cholesterol-rich particles in the plasma. ApoE plays an essential role in the formation of plasma lipoproteins and is involved in their production, conversion and clearance. ApoE is also a constituent of a subclass of high density of lipoproteins (HDL) involved in cholesterol transport.
Form	Lyophilized from a 0.2 um filtered solution of 2umM PBS, 5mM CHAPS, 2mM DDT, pH7.4.
Molecular Mass	Predicted Molecular Weight: 34.9kDa Apparent Molecular Weight: 35-45kDa, reducing conditions.
AA Sequence	Lys19-His317

 Tel: 1-631-559-9269 1-516-512-3133

 Email: info@creative-biomart.com  Fax: 1-631-938-8127

 45-1 Ramsey Road, Shirley, NY 11967, USA

Endotoxin	Less than 0.1 EU/ug.
Purity	>95%
Storage	<p>Lyophilized protein should be stored at < -20 centigrade, though stable at room temperature for 3 weeks.</p> <p>Reconstituted protein solution can be stored at 4-7 centigrade for 2-7 days. Aliquots of reconstituted samples are stable at < -20 centigrade for 3 months.</p> <p>Always centrifuge tubes before opening. Do not mix by vortex or pipetting.</p>
Reconstitution	<p>It is not recommended to reconstitute to a concentration less than 100µg/ml.</p> <p>Dissolve the lyophilized protein in distilled water.</p> <p>Please aliquot the reconstituted solution to minimize freeze-thaw cycles.</p>
Quality Statement	Purity: greater than 95% as determined by reducing SDS-PAGE.
Shipping	<p>The product is shipped at ambient temperature.</p> <p>Upon receipt, store it immediately at the temperature listed below.</p>

GENE INFORMATION

Gene Name	APOE apolipoprotein E [Homo sapiens (human)]
Official Symbol	APOE
Synonyms	AD2; LPG; APO-E; ApoE4; LDLCQ5; apolipoprotein E; apolipoprotein E3
Gene ID	348
mRNA Refseq	NM_000041.4

 Tel: 1-631-559-9269 1-516-512-3133

 Email: info@creative-biomart.com  Fax: 1-631-938-8127

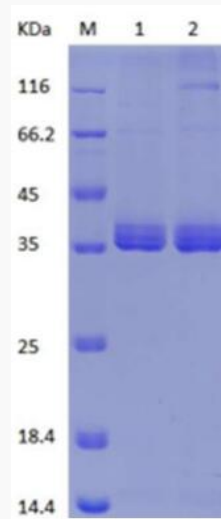
 45-1 Ramsey Road, Shirley, NY 11967, USA

Protein Refseq NP_000032.1

MIM 107741

UniProt ID P02649

SDS-PAGE



1: Reducing condition 2: Non-reducing condition

 Tel: 1-631-559-9269 1-516-512-3133

 Email: info@creative-biomart.com  Fax: 1-631-938-8127

 45-1 Ramsey Road, Shirley, NY 11967, USA