

## Recombinant Dog APOE protein(19-323aa), His&Myc-tagged

Cat. No. APOE-6186D Lot. No. (See product label)

### SPECIFICATION

|                         |  |
|-------------------------|--|
| <b>Product Overview</b> | Recombinant Dog APOE protein(P18649)(19-323aa), fused with N-terminal His tag and C-terminal Myc tag, was expressed in E.coli.   |
| <b>Species</b>          | Dog  |
| <b>Source</b>           | E.coli   |
| <b>ProteinLength</b>    | 19-323aa   |
| <b>Form</b>             | If the delivery form is liquid, the default storage buffer is Tris/PBS-based buffer, 5%-50% glycerol. If the delivery form is lyophilized powder, the buffer before lyophilization is Tris/PBS-based buffer, 6% Trehalose, pH 8.0.   |
| <b>Molecular Mass</b>   | 42.7 kDa   |
| <b>Purity</b>           | Greater than 85% as determined by SDS-PAGE.  |
| <b>Storage</b>          | Store at -20°C/-80°C upon receipt, aliquoting is necessary for mutiple use. Avoid repeated freeze-thaw cycles.   |
| <b>Reconstitution</b>   | We recommend that this vial be briefly centrifuged prior to opening to bring the contents to the bottom. Please reconstitute protein in deionized sterile water to a concentration of 0.1-1.0 mg/mL. We recommend to add 5-50% of glycerol (final concentration) and aliquot for long-term storage at -20°C/-80°C. |

 Tel: 1-631-559-9269 1-516-512-3133

 Email: [info@creative-biomart.com](mailto:info@creative-biomart.com)  Fax: 1-631-938-8127

 45-1 Ramsey Road, Shirley, NY 11967, USA

**AA Sequence**

DVQPEPELERELEPKVQQELEPEAGWQTGQPWEAALARFWDYLRWVQTLSDQVQ  
 EGVLNTQVTQELTALMDETMKEVKAYKAELDEQLGPMTSETQARVAKELQAAQARL  
 RSDMEDVRNRLTQYRGELQAMLGQSSEELRARFASHMRKLRKRVLRDAEDLQRRL  
 AVYKAGVREGAERSVSSIRERLWPLLEQARERNAKVGALATQPLLERADALGQQLR  
 GQLEEMSSRARGHLEEMREQIQEVRVKMEEQADQIRQKAEAFQARLKSWFEPLLE  
 DMQRQWDGLVEKVQAAVATIPTSHPVEEP

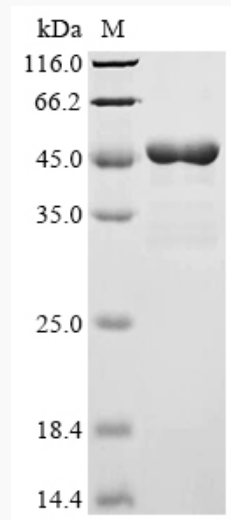
**GENE INFORMATION**

**Gene Name** APOE apolipoprotein E [ *Canis lupus familiaris* ]

**Official Symbol** APOE

**Synonyms** APOE; apolipoprotein E;

**Gene ID** 476438

**SDS-PAGE**


Tel: 1-631-559-9269 1-516-512-3133

Email: [info@creative-biomart.com](mailto:info@creative-biomart.com) Fax: 1-631-938-8127

45-1 Ramsey Road, Shirley, NY 11967, USA