

# Recombinant Full Length Rat apolipoprotein E Protein, His tagged

**Cat. No.** APOE-726R    **Lot. No.** (See product label)

## SPECIFICATION

### Product Overview

Recombinant Full Length Rat apolipoprotein E Protein (1-312 aa) with His tag was expressed in HEK293.

### Species

Rat

### Source

HEK293

### ProteinLength

1-312 aa

### Description

Enables several functions, including amyloid-beta binding activity; hydroxyapatite binding activity; and phospholipid binding activity. Involved in several processes, including cellular response to alcohol; neurogenesis; and regulation of lipid metabolic process. Located in several cellular components, including endosome; microtubule; and neuronal cell body. Is extrinsic component of external side of plasma membrane. Part of several cellular components, including discoidal high-density lipoprotein particle; low-density lipoprotein particle; and triglyceride-rich plasma lipoprotein particle. Used to study artery disease (multiple); familial hyperlipidemia (multiple); glomerulosclerosis; middle cerebral artery infarction; and steatotic liver disease (multiple). Biomarker of several diseases, including glomerulonephritis (multiple); hyperhomocysteinemia; hypertension; sciatic neuropathy; and transient cerebral ischemia. Human ortholog(s) of this gene implicated in several diseases, including Alzheimer's disease (multiple); artery disease (multiple); biliary tract cancer (multiple); eye disease (multiple); and familial hyperlipidemia (multiple). Orthologous to human

 Tel: 1-631-559-9269    1-516-512-3133

 Email: [info@creative-biomart.com](mailto:info@creative-biomart.com)     Fax: 1-631-938-8127

 45-1 Ramsey Road, Shirley, NY 11967, USA

	APOE (apolipoprotein E).
<b>Molecular Mass</b>	34 kDa
<b>AA Sequence</b>	EGELEVTDQLPGQSDQPWEQALNRFWDYLRWVQTLSDQVQEELQSSQVTQELTV LMEDTMTEVKAYKKELEEQLGPVAEETRARLAKEVQAAQARLGADMEDLRNRLGQ YRNEVNTMLGQSTEELRSRLSTHLRKMRLMRDADDLQKRLAVYKAGAQEGAER GVS AIRERLGPLVEQGRQRTANLGAGAAQPLRDRAQALSDRIRGRLEEVGNQARD RLEEVREQMEEVRSKMEEQTQQIRLQAEIFQARIKGWFEPLVEDMQRQWANLMEKI QASVATNSIASTTVPLENQHHHHHH
<b>Endotoxin</b>	< 1 EU/μg by LAL.
<b>Purity</b>	> 90 % by SDS-PAGE
<b>Storage</b>	Store it under sterile conditions at -20 to -80 centigrade. It is recommended that the protein be aliquoted for optimal storage. Avoid repeated freeze-thaw cycles.
<b>Storage Buffer</b>	Sterile PBS, pH7.4
<b>Concentration</b>	1 mg/mL by BCA
<b>GENE INFORMATION</b>	
<b>Gene Name</b>	<a href="#">Apoe apolipoprotein E [ Rattus norvegicus (Norway rat) ]</a>
<b>Official Symbol</b>	<a href="#">APOE</a>
<b>Synonyms</b>	APOE; apolipoprotein E; apo-E; APOEA;
<b>Gene ID</b>	<a href="#">25728</a>

 Tel: 1-631-559-9269 1-516-512-3133

 Email: [info@creative-biomart.com](mailto:info@creative-biomart.com)  Fax: 1-631-938-8127

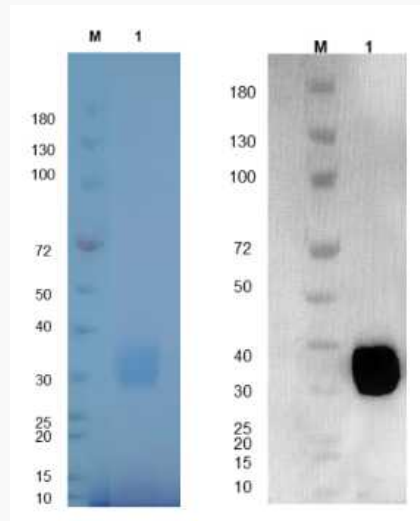
 45-1 Ramsey Road, Shirley, NY 11967, USA

mRNA Refseq [NM\\_138828](#)

Protein Refseq [NP\\_620183](#)

UniProt ID [P02650](#)

**Reducing 12 % SDS-PAGE (CBB stained) and WB (Anti-His Mouse Monoclonal antibody) analysis profiles of purified APOE.**



 Tel: 1-631-559-9269 1-516-512-3133

 Email: [info@creative-biomart.com](mailto:info@creative-biomart.com)  Fax: 1-631-938-8127

 45-1 Ramsey Road, Shirley, NY 11967, USA