

Recombinant Human APOE4 protein, His-Trx-tagged, Amine-Labeled Biotinylated

Cat. No. APOE4-2869HB **Lot. No.** (See product label)

SPECIFICATION

Product Overview	Biotinylated Recombinant Human SEZ6 protein(Q53EL9-1)(Leu20-His925) is expressed from HEK293 with His tag and Avi tag at the C-terminus.
Species	Human
Source	HEK293
ProteinLength	Leu20-His925
Tag	C-His-Avi
Conjugation/Label	Biotin
Form	Lyophilized from 0.22 µm filtered solution in PBS (pH 7.4). Normally 8% trehalose is added as protectant before lyophilization.
Bio-activity	Immobilized Biotinylated Human SEZ6, His Tag at 2µg/ml (100µl/well) on the streptavidin precoated plate (5µg/ml). Dose response curve for Anti-SEZ6 Antibody, hFc Tag with the EC50 of 10.0ng/ml determined by ELISA.
Molecular Mass	The protein has a predicted MW of 100.7 kDa. Due to glycosylation, the protein migrates to 170-200 kDa based on Tris-Bis PAGE result.
Endotoxin	Less than 1EU per µg by the LAL method.

 Tel: 1-631-559-9269 1-516-512-3133

 Email: info@creative-biomart.com  Fax: 1-631-938-8127

 45-1 Ramsey Road, Shirley, NY 11967, USA

Purity	> 95% as determined by Tris-Bis PAGE > 95% as determined by HPLC
Storage	Store at -20 to -80°C for 12 months as supplied from date of receipt; -80°C for 3-6 months after reconstitution; 2-8°C for 2-7 days after reconstitution; Recommend to aliquot the protein into smaller quantities for optimal storage. Please minimize freeze-thaw cycles.
Reconstitution	Centrifuge the tube before opening. Reconstituting to a concentration more than 100 µg/ml is recommended. Dissolve the lyophilized protein in distilled water.
Conjugation	Biotin

GENE INFORMATION

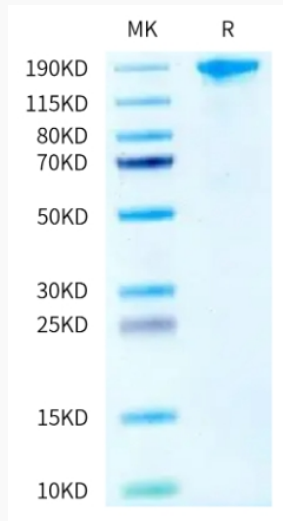
Gene Name	SEZ6 seizure related 6 homolog (mouse) [Homo sapiens]
Official Symbol	SEZ6
Gene ID	124925
mRNA Refseq	NM_178860.4
Protein Refseq	NP_849191.3
UniProt ID	Q53EL9

 Tel: 1-631-559-9269 1-516-512-3133

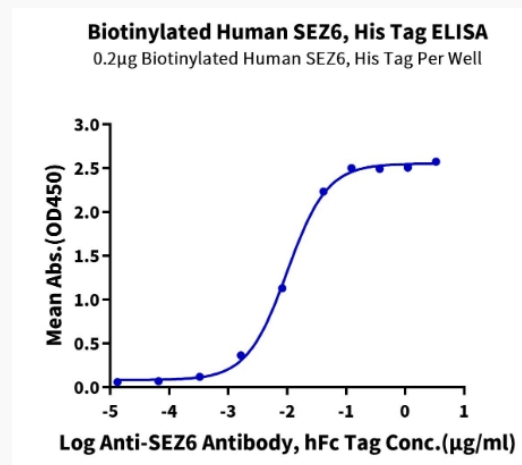
 Email: info@creative-biomart.com  Fax: 1-631-938-8127

 45-1 Ramsey Road, Shirley, NY 11967, USA

SDS-PAGE



ELISA Data



Tel: 1-631-559-9269 1-516-512-3133

Email: info@creative-biomart.com Fax: 1-631-938-8127

45-1 Ramsey Road, Shirley, NY 11967, USA