

## Recombinant Human APOF protein, His & T7-tagged

Cat. No. APOF-1923H Lot. No. (See product label)

### SPECIFICATION

<b>Product Overview</b>	Recombinant Human APOF aa. (Val122~Trp307 (Accession # Q13790)) fused with N-terminal His & T7 tag was produced in E. coli cells.
<b>Species</b>	Human
<b>Source</b>	E.coli
<b>ProteinLength</b>	Val122~Trp307
<b>Description</b>	The product of this gene is one of the minor apolipoproteins found in plasma. This protein forms complexes with lipoproteins and may be involved in transport and/or esterification of cholesterol.
<b>Form</b>	Freeze-dried powder
<b>Molecular Mass</b>	Predicted Molecular Mass: 24.0kDa.
<b>Endotoxin</b>	<1.0EU per 1ug (determined by the LAL method)
<b>Purity</b>	>95%
<b>Characteristic</b>	The isoelectric point is 6.3.
<b>Applications</b>	SDS-PAGE; WB; ELISA; IP.

 Tel: 1-631-559-9269 1-516-512-3133

 Email: [info@creative-biomart.com](mailto:info@creative-biomart.com)  Fax: 1-631-938-8127

 45-1 Ramsey Road, Shirley, NY 11967, USA

<b>Stability</b>	The thermal stability is described by the loss rate of the target protein. The loss rate was determined by accelerated thermal degradation test, that is, incubate the protein at 37°C for 48h, and no obvious degradation and precipitation were observed. (Referring from China Biological Products Standard, which was calculated by the Arrhenius equation.) The loss of this protein is less than 5% within the expiration date under appropriate storage condition.
<b>Storage</b>	Avoid repeated freeze/thaw cycles. Store at 2-8°C for one month. Aliquot and store at -80°C for 12 months.
<b>Storage Buffer</b>	Supplied as lyophilized form in PBS, pH7.4, containing 5% sucrose, 0.01% sarcosyl.
<b>Reconstitution</b>	Reconstitute in sterile PBS, pH7.2-pH7.4.
<b>GENE INFORMATION</b>	
<b>Gene Name</b>	<a href="#">APOF apolipoprotein F [ Homo sapiens (human) ]</a>
<b>Official Symbol</b>	<a href="#">APOF</a>
<b>Synonyms</b>	Myh6; myosin heavy chain 6; Myhca; myosin-6; myHC-alpha; myosin heavy chain polypeptide 6 cardiac muscle adult; myosin heavy chain, cardiac muscle alpha isoform; myosin heavy chain, polypeptide 6, cardiac muscle, alpha; myosin, heavy chain 6, cardiac muscle, alpha; myosin, heavy polypeptide 6, cardiac muscle, alpha
<b>Gene ID</b>	<a href="#">319</a>
<b>mRNA Refseq</b>	<a href="#">NM_001638.2</a>
<b>Protein Refseq</b>	<a href="#">NP_001629.1</a>

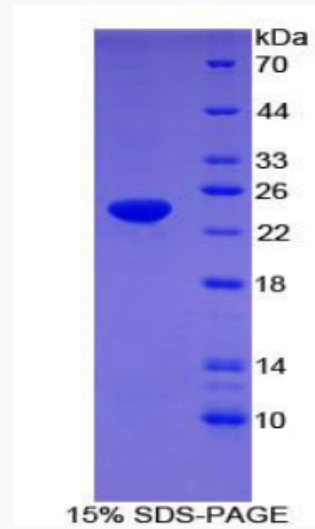
 Tel: 1-631-559-9269 1-516-512-3133

 Email: [info@creative-biomart.com](mailto:info@creative-biomart.com)  Fax: 1-631-938-8127

 45-1 Ramsey Road, Shirley, NY 11967, USA

UniProt ID

Q13790



SDS-PAGE

 Tel: 1-631-559-9269 1-516-512-3133

 Email: [info@creative-biomart.com](mailto:info@creative-biomart.com)  Fax: 1-631-938-8127

 45-1 Ramsey Road, Shirley, NY 11967, USA