

Recombinant Human APOF protein, GST-tagged

Cat. No. APOF-709H Lot. No. (See product label)

SPECIFICATION

Product Overview	Human APOF full-length ORF (AAH26257, 37 a.a. - 327 a.a.) recombinant protein with GST-tag at N-terminal.
Species	Human
Source	Wheat Germ
Description	The product of this gene is one of the minor apolipoproteins found in plasma. This protein forms complexes with lipoproteins and may be involved in transport and/or esterification of cholesterol. [provided by RefSeq, Jul 2008]
Molecular Mass	57.64 kDa
AA Sequence	<p>TSYGKQTNVLMHFPLSLESQTPSSDPLSCQFLHPKSLPGFSHMAPLPKFLVSLALRN DALEEAGCQADVWALQLQLYRQGGVNATQVLIQHLRGLQKGRSTERNVSVEALAS ALQLLAREQQSTGRVGRSLPTEDCENEKEQAVHNVVQLLPVGVTFYNLGTALYYAT QNCLGKARERGRDGAIDLGYDLLMTMAGMSGGPMGLAISAAALKPALRSGVQQLIQY YQDQKDANISQPETTKEGLRAISDVSDLEETTTLASFISEVVSSAPYWGWAIIKSYDL DPGAGSLEI</p>
Applications	Enzyme-linked Immunoabsorbent Assay; Western Blot (Recombinant protein); Antibody Production; Protein Array
Notes	Best use within three months from the date of receipt of this protein.

 Tel: 1-631-559-9269 1-516-512-3133

 Email: info@creative-biomart.com  Fax: 1-631-938-8127

 45-1 Ramsey Road, Shirley, NY 11967, USA

Storage Store at -80 centigrade. Aliquot to avoid repeated freezing and thawing.

Storage Buffer 50 mM Tris-HCl, 10 mM reduced Glutathione, pH=8.0 in the elution buffer.

GENE INFORMATION

Gene Name APOF apolipoprotein F [Homo sapiens]

Official Symbol APOF

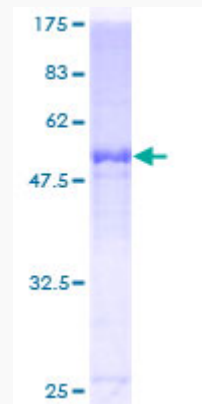
Synonyms APOF; apolipoprotein F; lipid transfer inhibitor protein; LTIP; Apo-F; MGC22520; DKFZp781G18150;

Gene ID 319

mRNA Refseq NM_001638

Protein Refseq NP_001629

UniProt ID Q13790



 Tel: 1-631-559-9269 1-516-512-3133

 Email: info@creative-biomart.com  Fax: 1-631-938-8127

 45-1 Ramsey Road, Shirley, NY 11967, USA



12.5% SDS-PAGE Stained with Coomassie Blue.

 Tel: 1-631-559-9269 1-516-512-3133

 Email: info@creative-biomart.com  Fax: 1-631-938-8127

 45-1 Ramsey Road, Shirley, NY 11967, USA