

## Recombinant Mouse APOH protein, His-tagged

Cat. No. APOH-1794M Lot. No. (See product label)

### SPECIFICATION

<b>Product Overview</b>	Recombinant Mouse APOH protein(Q01339)(Gly20-Cys345), fused with C-terminal His tag, was expressed in HEK293.
<b>Species</b>	Mouse
<b>Source</b>	HEK293
<b>ProteinLength</b>	Gly20-Cys345
<b>Tag</b>	C-His
<b>Form</b>	Lyophilized from 0.22µm filtered solution in PBS (pH 7.4). Normally 8% trehalose is added as protectant before lyophilization.
<b>Molecular Mass</b>	The protein has a predicted MW of 37.7 kDa. Due to glycosylation, the protein migrates to 53-60 kDa based on Tris-Bis PAGE result.
<b>Endotoxin</b>	Less than 1EU per µg by the LAL method.
<b>Purity</b>	> 95% as determined by Tris-Bis PAGE;> 95% as determined by HPLC
<b>Storage</b>	Reconstituted protein stable at -80°C for 12 months, 4°C for 1 week. Use a manual defrost freezer and avoid repeated freeze-thaw cycles.
<b>Reconstitution</b>	Centrifuge tubes before opening. Reconstituting to a concentration more than 100

 Tel: 1-631-559-9269 1-516-512-3133

 Email: [info@creative-biomart.com](mailto:info@creative-biomart.com)  Fax: 1-631-938-8127

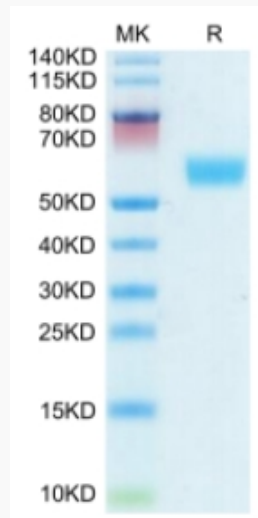
 45-1 Ramsey Road, Shirley, NY 11967, USA

µg/ml is recommended. Dissolve the lyophilized protein in distilled water.

## GENE INFORMATION

<b>Gene Name</b>	<a href="#">ApoH apolipoprotein H [ Mus musculus ]</a>
<b>Official Symbol</b>	<a href="#">APOH</a>
<b>Synonyms</b>	APOH; apolipoprotein H; beta-2-glycoprotein 1; apo-H; beta(2)GPI; APC inhibitor; beta-2-glycoprotein I; activated protein C-binding protein; B2GPI; beta2-GPI; beta-2-GPI;
<b>Gene ID</b>	<a href="#">11818</a>
<b>mRNA Refseq</b>	<a href="#">NM_013475</a>
<b>Protein Refseq</b>	<a href="#">NP_038503</a>

### Tris-Bis PAGE



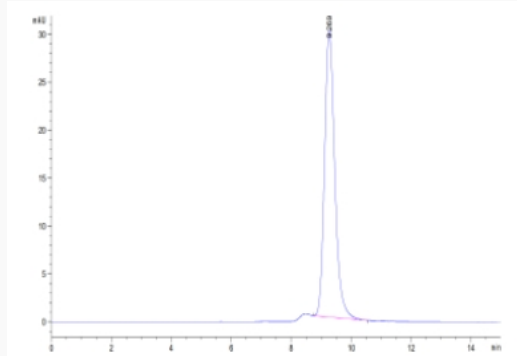
 Tel: 1-631-559-9269 1-516-512-3133

 Email: [info@creative-biomart.com](mailto:info@creative-biomart.com)  Fax: 1-631-938-8127

 45-1 Ramsey Road, Shirley, NY 11967, USA



SEC-HPLC



Tel: 1-631-559-9269 1-516-512-3133

Email: [info@creative-biomart.com](mailto:info@creative-biomart.com) Fax: 1-631-938-8127

45-1 Ramsey Road, Shirley, NY 11967, USA