

Active Recombinant Human APOH protein, His-tagged

Cat. No. APOH-308H Lot. No. (See product label)

SPECIFICATION

Product Overview	Active Recombinant Human APOH protein(P02749)(Gly20-Cys345) is expressed from HEK293 with His tag at the C-Terminus.
Species	Human
Source	HEK293
ProteinLength	20-345 aa
Form	Lyophilized from 0.22µm filtered solution in PBS (pH 7.4).
Bio-activity	Immobilized Human APOH, His Tag at 5µg/ml (100µl/Well) on the plate. Dose response curve for Anti-APOH Antibody, hFc Tag with the EC50 of 0.17µg/ml determined by ELISA.
Molecular Mass	The protein has a predicted MW of 37.4 kDa. Due to glycosylation, the protein migrates to 52-60 kDa based on Bis-Tris PAGE result.
Endotoxin	Less than 0.01 EU per µg by the LAL method.
Purity	> 95% as determined by Bis-Tris PAGE > 95% as determined by HPLC
Storage	Store at -20 to -80°C for 12 months as supplied from date of receipt. -80°C for 3 months after reconstitution. Recommend to aliquot the protein into smaller quantities for optimal storage. Please minimize freeze-thaw cycles.

 Tel: 1-631-559-9269 1-516-512-3133

 Email: info@creative-biomart.com  Fax: 1-631-938-8127

 45-1 Ramsey Road, Shirley, NY 11967, USA

Reconstitution	Dissolve the lyophilized protein in distilled water.
protein Refseq-Weblink	http://www.ncbi.nlm.nih.gov/protein/NP_000033.2
Unit ID	P02749
Unit ID-Weblink	https://www.uniprot.org/uniprotkb/P02749

GENE INFORMATION

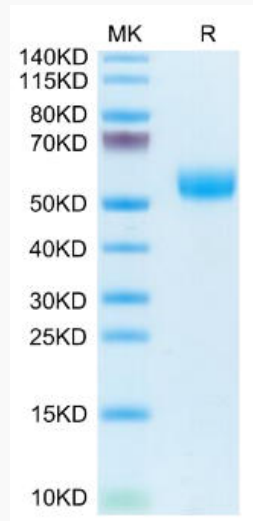
Gene Name	<i>APOH</i> apolipoprotein H (beta-2-glycoprotein I) [Homo sapiens]
Official Symbol	<i>APOH</i>
Synonyms	APOH; apolipoprotein H (beta-2-glycoprotein I); B2G1; beta-2-glycoprotein 1; beta 2 glycoprotein I; BG; B2GPI; apo-H; beta(2)GPI; APC inhibitor; antidiolipin cofactor; activated protein C-binding protein; B2GP1;
Gene ID	350
mRNA Refseq	NM_000042
protein Refseq	NP_000033
MIM	138700

 Tel: 1-631-559-9269 1-516-512-3133

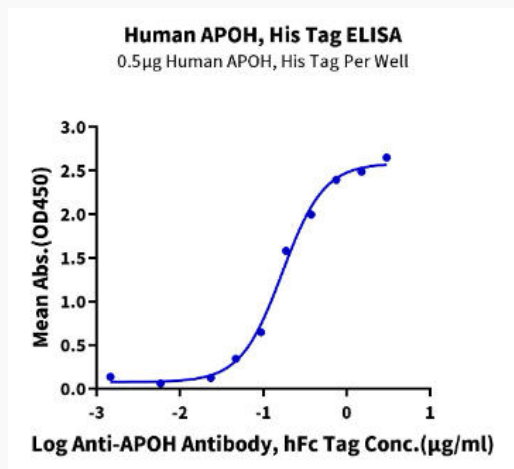
 Email: info@creative-biomart.com  Fax: 1-631-938-8127

 45-1 Ramsey Road, Shirley, NY 11967, USA

Bis-Tris PAGE



ELISA Data



 Tel: 1-631-559-9269 1-516-512-3133

 Email: info@creative-biomart.com  Fax: 1-631-938-8127

 45-1 Ramsey Road, Shirley, NY 11967, USA