

## Recombinant Human APOH protein(119-345aa), His-GST-tagged

Cat. No. APOH-9821H Lot. No. (See product label)

### SPECIFICATION

|                         |  |
|-------------------------|--|
| <b>Product Overview</b> | Recombinant Human APOH protein(P02749)(119-345aa), fused with N-terminal His and GST tag, was expressed in E.coli.   |
| <b>Species</b>          | Human  |
| <b>Source</b>           | E.coli   |
| <b>ProteinLength</b>    | 119-345aa  |
| <b>Form</b>             | If the delivery form is liquid, the default storage buffer is Tris/PBS-based buffer, 5%-50% glycerol. If the delivery form is lyophilized powder, the buffer before lyophilization is Tris/PBS-based buffer, 6% Trehalose, pH 8.0.   |
| <b>Molecular Mass</b>   | 56.8 kDa   |
| <b>Purity</b>           | Greater than 85% as determined by SDS-PAGE.  |
| <b>Storage</b>          | Store at -20°C/-80°C upon receipt, aliquoting is necessary for multiple use. Avoid repeated freeze-thaw cycles.  |
| <b>Reconstitution</b>   | We recommend that this vial be briefly centrifuged prior to opening to bring the contents to the bottom. Please reconstitute protein in deionized sterile water to a concentration of 0.1-1.0 mg/mL. We recommend to add 5-50% of glycerol (final concentration) and aliquot for long-term storage at -20°C/-80°C. |

 Tel: 1-631-559-9269 1-516-512-3133

 Email: [info@creative-biomart.com](mailto:info@creative-biomart.com)  Fax: 1-631-938-8127

 45-1 Ramsey Road, Shirley, NY 11967, USA

**AA Sequence**

ADSAKCTEEGKWSPPELVCAPICPPPSIPTFATLRVYKPSAGNNSLYRDTAVFECLP  
 QHAMFGNDTITCTTHGNWTKLPECREVKCPFSPRPDNGFVNYPKPTLYYKDKATF  
 GCHDGYSLDGPEEIECTKLGNWSAMPSCASCKVPVKKATVVYQGERVKIQEKFKN  
 GMLHGDKVSFFCKNKEKKCSYTEDAQCIDGTIEVPKCFKEHSSLAFWKT DASDVKP  
 C

## GENE INFORMATION

**Gene Name** [APOH apolipoprotein H \(beta-2-glycoprotein I\) \[ Homo sapiens \]](#)

**Official Symbol** [APOH](#)

**Synonyms** APOH; apolipoprotein H (beta-2-glycoprotein I); B2G1; beta-2-glycoprotein 1; beta 2 glycoprotein I; BG; B2GPI; apo-H; beta(2)GPI; APC inhibitor; antidiolipin cofactor; activated protein C-binding protein; B2GP1;

**Gene ID** [350](#)

**mRNA Refseq** [NM\\_000042](#)

**Protein Refseq** [NP\\_000033](#)

**MIM** [138700](#)

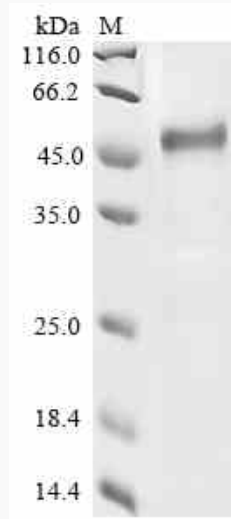
**UniProt ID** [P02749](#)

 Tel: 1-631-559-9269 1-516-512-3133

 Email: [info@creative-biomart.com](mailto:info@creative-biomart.com)  Fax: 1-631-938-8127

 45-1 Ramsey Road, Shirley, NY 11967, USA

**SDS-PAGE**



 Tel: 1-631-559-9269 1-516-512-3133

 Email: [info@creative-biomart.com](mailto:info@creative-biomart.com)  Fax: 1-631-938-8127

 45-1 Ramsey Road, Shirley, NY 11967, USA