

Recombinant Full Length Human APOL1 Protein, C-Flag-tagged

Cat. No. APOL1-228HFL **Lot. No.** (See product label)

SPECIFICATION

Product Overview	Recombinant Full Length Human APOL1 Protein, fused to Flag-tag at C-terminus, was expressed in Mammalian cells.
Species	Human
Source	Mammalian Cells
Description	This gene encodes a secreted high density lipoprotein which binds to apolipoprotein A-I. Apolipoprotein A-I is a relatively abundant plasma protein and is the major apoprotein of HDL. It is involved in the formation of most cholesteryl esters in plasma and also promotes efflux of cholesterol from cells. This apolipoprotein L family member may play a role in lipid exchange and transport throughout the body, as well as in reverse cholesterol transport from peripheral cells to the liver. Several different transcript variants encoding different isoforms have been found for this gene.
Form	25 mM Tris HCl, pH 7.3, 100 mM glycine, 10% glycerol.
Molecular Mass	41.1 kDa
AA Sequence	MEGAALLRVSVLCIWMSALFLGVGVRAEEAGARVQQNVPSGTDGDPQSKPLGDW AAGTMDPESSIFIED AIKYFKEKVSTQNLLLLLTDNEAWNGFVAAAELPRNEADELRK ALDNLARQMIMKDKNWHDKGQQYRNWF LKEFPRLKSKLEDNIRRLRALADGVQKV HKGTTIANVVSGSLSSISGILTLVGMGLAPFTEGGSLVLEP GMELGITAALTGITSST MDYGKKWWTQAQAHDLVIKSLDKLKEVREFLGENISNFLSLAGNTYQLTRGIG KDIR

 Tel: 1-631-559-9269 1-516-512-3133

 Email: info@creative-biomart.com  Fax: 1-631-938-8127

 45-1 Ramsey Road, Shirley, NY 11967, USA



ALRRARANLQSVPHASASRPRVTEPISAESGEQVERVNEPSILEMSRGVKLTDVAPV
SFFLVLDVV
YLVYESKHLHEGAKSETAEELKKVAQELEEKLNILNNNYKILQADQELTRTRPLEQKLI
SEEDLAANDILDYKDDDDKV

Purity > 80% as determined by SDS-PAGE and Coomassie blue staining.

Stability Stable for 12 months from the date of receipt of the product under proper storage and handling conditions. Avoid repeated freeze-thaw cycles.

Storage Store at -80 centigrade.

Concentration >50 ug/mL as determined by microplate BCA method.

Preparation Recombinant protein was captured through anti-DDK affinity column followed by conventional chromatography steps.

Protein Families Secreted Protein, Transmembrane

Full Length Full L.

GENE INFORMATION

Gene Name [APOL1 apolipoprotein L1 \[Homo sapiens \(human\) \]](#)

Official Symbol [APOL1](#)

Synonyms APOL; APO-L; FSGS4; APOL-I

Gene ID [8542](#)

Tel: 1-631-559-9269 1-516-512-3133

Email: info@creative-biomart.com Fax: 1-631-938-8127

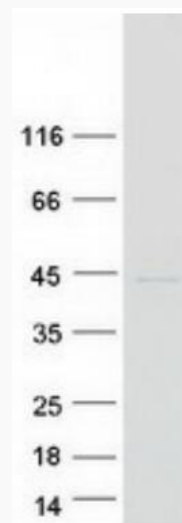
45-1 Ramsey Road, Shirley, NY 11967, USA

mRNA Refseq [NM_003661.4](#)

Protein Refseq [NP_003652.2](#)

MIM [603743](#)

UniProt ID [O14791](#)



Coomassie blue staining of purified APOL1 protein.

 Tel: 1-631-559-9269 1-516-512-3133

 Email: info@creative-biomart.com  Fax: 1-631-938-8127

 45-1 Ramsey Road, Shirley, NY 11967, USA