

Recombinant Human APOL1 protein, GST-tagged

Cat. No. APOL1-711H **Lot. No.** (See product label)

SPECIFICATION

Product Overview	Human APOL1 full-length ORF (AAH17331.1, 1 a.a. - 238 a.a.) recombinant protein with GST-tag at N-terminal.
Species	Human
Source	Wheat Germ
Description	<p>This gene encodes a secreted high density lipoprotein which binds to apolipoprotein A-I. Apolipoprotein A-I is a relatively abundant plasma protein and is the major apoprotein of HDL. It is involved in the formation of most cholesteryl esters in plasma and also promotes efflux of cholesterol from cells. This apolipoprotein L family member may play a role in lipid exchange and transport throughout the body, as well as in reverse cholesterol transport from peripheral cells to the liver. Several different transcript variants encoding different isoforms have been found for this gene. [provided by RefSeq, Nov 2008]</p>
Molecular Mass	52.4 kDa
AA Sequence	<p>MEGAALLRVSVLCIWMSALFLGVGVRAEEAGARVQQNVPSGTDGDPQSKPLGDW AAGTMDPESSIFIEDAIKYFKEKVSTQNLLLLLDNEAWNGFVAAAELPRNEADELRK ALDNLARQMIMKDKNWHDKGQQYRNWFLKEFPRLKSELEDNIRRLRALADGVQKV HKGTTIANVVSGSLSISSGILTLVGMGLAPFTEGGSLVLLLEPGMELGITAALTGITSST MDYGKKWWTQA</p>
Applications	Enzyme-linked Immunoabsorbent Assay; Western Blot (Recombinant protein);

 Tel: 1-631-559-9269 1-516-512-3133

 Email: info@creative-biomart.com  Fax: 1-631-938-8127

 45-1 Ramsey Road, Shirley, NY 11967, USA

Antibody Production; Protein Array

Notes	Best use within three months from the date of receipt of this protein.
Storage	Store at -80 centigrade. Aliquot to avoid repeated freezing and thawing.
Storage Buffer	50 mM Tris-HCl, 10 mM reduced Glutathione, pH=8.0 in the elution buffer.

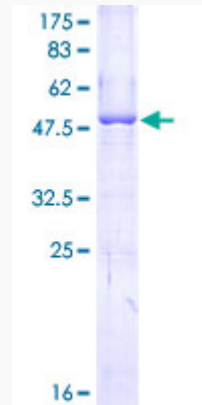
GENE INFORMATION

Gene Name	APOL1 apolipoprotein L, 1 [Homo sapiens]
Official Symbol	APOL1
Synonyms	APOL1; apolipoprotein L, 1; APOL; apolipoprotein L1; APO-L; FSGS4; APOL-I;
Gene ID	8542
mRNA Refseq	NM_001136540
Protein Refseq	NP_001130012
MIM	603743
UniProt ID	O14791

 Tel: 1-631-559-9269 1-516-512-3133

 Email: info@creative-biomart.com  Fax: 1-631-938-8127

 45-1 Ramsey Road, Shirley, NY 11967, USA



12.5% SDS-PAGE Stained with Coomassie Blue.

 Tel: 1-631-559-9269 1-516-512-3133

 Email: info@creative-biomart.com  Fax: 1-631-938-8127

 45-1 Ramsey Road, Shirley, NY 11967, USA