

# Recombinant Full Length Human APOL3 Protein, C-Flag-tagged

**Cat. No.** APOL3-1778HFL    **Lot. No.** (See product label)

## SPECIFICATION

<b>Product Overview</b>	Recombinant Full Length Human APOL3 Protein, fused to Flag-tag at C-terminus, was expressed in Mammalian cells.
<b>Species</b>	Human
<b>Source</b>	Mammalian Cells
<b>Description</b>	This gene is a member of the apolipoprotein L gene family, and it is present in a cluster with other family members on chromosome 22. The encoded protein is found in the cytoplasm, where it may affect the movement of lipids, including cholesterol, and/or allow the binding of lipids to organelles. In addition, expression of this gene is up-regulated by tumor necrosis factor-alpha in endothelial cells lining the normal and atherosclerotic iliac artery and aorta. Alternative splicing results in multiple transcript variants.
<b>Form</b>	25 mM Tris HCl, pH 7.3, 100 mM glycine, 10% glycerol.
<b>Molecular Mass</b>	36.4 kDa
<b>AA Sequence</b>	MDSEKKRFTEEATKYFRERVSPVHLQILLTNNEAWKRFVTAELPRDEADALYEALK KLRTYAAIEDEYV QQKDEQFREWFLKEFPQVKRKIQESIEKLRALANGIEEVHRGCTI SNVSSSTGAASGIMSLAGLVLAPF TAGTSLALTAAGVGLGAASAVTGITTSIVEHSY TSSAEAEASRLTATSIDRLKVFKEVMRDITPNLLSLL NNYEATQTIGSEIRAIRQARA RARLPVTTWRISAGSGGQAERTIAGTTRAVSRGARILSATTSGIFLAL DVVNLVYESK

 Tel: 1-631-559-9269    1-516-512-3133

 Email: [info@creative-biomart.com](mailto:info@creative-biomart.com)     Fax: 1-631-938-8127

 45-1 Ramsey Road, Shirley, NY 11967, USA

HLHEGAKSASAEELRRQAQELEENLMELTQIYQRLNPCHTH TRTRPLEQKLISEEDL  
AANDILDYKDDDDKV

**Purity** > 80% as determined by SDS-PAGE and Coomassie blue staining.

**Stability** Stable for 12 months from the date of receipt of the product under proper storage and handling conditions. Avoid repeated freeze-thaw cycles.

**Storage** Store at -80 centigrade.

**Concentration** >50 ug/mL as determined by microplate BCA method.

**Preparation** Recombinant protein was captured through anti-DDK affinity column followed by conventional chromatography steps.

**Full Length** Full L.

## GENE INFORMATION

**Gene Name** [APOL3 apolipoprotein L3 \[ Homo sapiens \(human\) \]](#)

**Official Symbol** [APOL3](#)

**Synonyms** CG121; CG12\_1; APOLIII; apoL-III

**Gene ID** [80833](#)

**mRNA Refseq** [NM\\_145641.3](#)

**Protein Refseq** [NP\\_663616.1](#)

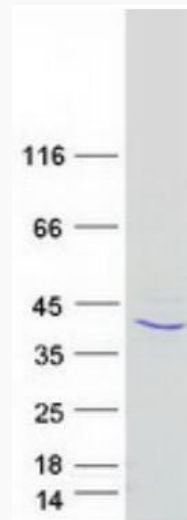
 Tel: 1-631-559-9269 1-516-512-3133

 Email: [info@creative-biomart.com](mailto:info@creative-biomart.com)  Fax: 1-631-938-8127

 45-1 Ramsey Road, Shirley, NY 11967, USA

**MIM** 607253

**UniProt ID** O95236



Coomassie blue staining of purified APOL3 protein.

 Tel: 1-631-559-9269 1-516-512-3133

 Email: [info@creative-biomart.com](mailto:info@creative-biomart.com)  Fax: 1-631-938-8127

 45-1 Ramsey Road, Shirley, NY 11967, USA