

Recombinant Human APOL3 Protein, Myc/DDK-tagged, C13 and N15-labeled

Cat. No. APOL3-472H **Lot. No.** (See product label)

SPECIFICATION

Product Overview

APOL3 MS Standard C13 and N15-labeled recombinant protein (NP_663614) with a C-terminal MYC/DDK tag, was expressed in HEK293 cells.

Species

Human

Source

HEK293

Description

This gene is a member of the apolipoprotein L gene family, and it is present in a cluster with other family members on chromosome 22. The encoded protein is found in the cytoplasm, where it may affect the movement of lipids, including cholesterol, and/or allow the binding of lipids to organelles. In addition, expression of this gene is up-regulated by tumor necrosis factor-alpha in endothelial cells lining the normal and atherosclerotic iliac artery and aorta. Alternative splicing results in multiple transcript variants.

Molecular Mass

36.5 kDa

AA Sequence

MDSEKKRFTEEATKYFRERVSPVHLQILLTNNEAWKRFVTAELPRDEADALYEALK
 KLRTYAAIEDEYVQQKDEQFREWFLKEFPQVKRKIQESIEKLRALANGIEEVHRGCTI
 SNVSSSTGAASGIMSLAGLVLPFTAGTSLALTAAGVGLGAASAVTGITTSIVEHSY
 TSSAEAEASRLTATSIDRLKVFKEVMRDITPNLLSLLNNYYEATQTIGSEIRAIRQARA
 RARLPVTTWRISAGSGGQAERTIAGTTRAVSRGARILSATTSGIFLALDVVNLVYESK
 HLHEGAKSASAEELRRQAQEELENMELTQIQRLNPCHTHTRTRPLEQKLISEEDL

 Tel: 1-631-559-9269 1-516-512-3133

 Email: info@creative-biomart.com  Fax: 1-631-938-8127

 45-1 Ramsey Road, Shirley, NY 11967, USA

AANDILDYKDDDDKV

Purity > 80% as determined by SDS-PAGE and Coomassie blue staining

Stability Stable for 3 months from receipt of products under proper storage and handling conditions.

Storage Store at -80 centigrade. Avoid repeated freeze-thaw cycles.

Concentration 50 µg/mL as determined by BCA

Storage Buffer 100 mM glycine, 25 mM Tris-HCl, pH 7.3.

GENE INFORMATION

Gene Name [APOL3 apolipoprotein L3 \[Homo sapiens \(human\) \]](#)

Official Symbol [APOL3](#)

Synonyms APOL3; apolipoprotein L, 3; apolipoprotein L3; APOLIII; CG12 1; CG12_1; apoL-III; apolipoprotein L-III; TNF-inducible protein CG12-1; CG121;

Gene ID [80833](#)

mRNA Refseq [NM_145639](#)

Protein Refseq [NP_663614](#)

MIM [607253](#)

UniProt ID [O95236](#)

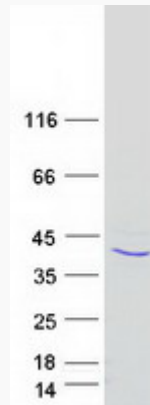
 Tel: 1-631-559-9269 1-516-512-3133

 Email: info@creative-biomart.com  Fax: 1-631-938-8127

 45-1 Ramsey Road, Shirley, NY 11967, USA



SDS-PAGE



Tel: 1-631-559-9269 1-516-512-3133

Email: info@creative-biomart.com Fax: 1-631-938-8127

45-1 Ramsey Road, Shirley, NY 11967, USA