

## Recombinant Human APOL3 protein, GST-tagged

Cat. No. APOL3-713H Lot. No. (See product label)

### SPECIFICATION

<b>Product Overview</b>	Human APOL3 full-length ORF ( NP_055164.1, 1 a.a. - 331 a.a.) recombinant protein with GST-tag at N-terminal.
<b>Species</b>	Human
<b>Source</b>	Wheat Germ
<b>Description</b>	This gene is a member of the apolipoprotein L gene family, and it is present in a cluster with other family members on chromosome 22. The encoded protein is found in the cytoplasm, where it may affect the movement of lipids, including cholesterol, and/or allow the binding of lipids to organelles. In addition, expression of this gene is up-regulated by tumor necrosis factor-alpha in endothelial cells lining the normal and atherosclerotic iliac artery and aorta. Alternative splicing results in multiple transcript variants. [provided by RefSeq, Mar 2015]
<b>Molecular Mass</b>	62.9 kDa
<b>AA Sequence</b>	MDSEKKRFTEEATKYFRERVSPVHLQILLTNNEAWKRFVTAELPRDEADALYEALK KLRTYAAIEDEYVQQKDEQFREWFLKEFPQVKRKIQESIEKLRALANGIEEVHRGCTI SNVSSSTGAASGIMSLAGLVLAPFTAGTSLALTAAGVGLGAASAVTGITTSIVEHSY TSSAEAEASRLTATSIDRLKVFKEVMRDITPNLLSLLNNYYEATQTIGSEIRAIRQARA RARLPVTTWRISAGSGGQAERTIAGTTRAVSRGARILSATTSGIFLALDVVNLVYESK HLHEGAKSASAEELRRQAQEELEENLMELTQIQRLNPCHTH
<b>Applications</b>	Enzyme-linked Immunoabsorbent Assay; Western Blot (Recombinant protein);

 Tel: 1-631-559-9269 1-516-512-3133

 Email: [info@creative-biomart.com](mailto:info@creative-biomart.com)  Fax: 1-631-938-8127

 45-1 Ramsey Road, Shirley, NY 11967, USA

Antibody Production; Protein Array

<b>Notes</b>	Best use within three months from the date of receipt of this protein.
<b>Storage</b>	Store at -80 centigrade. Aliquot to avoid repeated freezing and thawing.
<b>Storage Buffer</b>	50 mM Tris-HCl, 10 mM reduced Glutathione, pH=8.0 in the elution buffer.

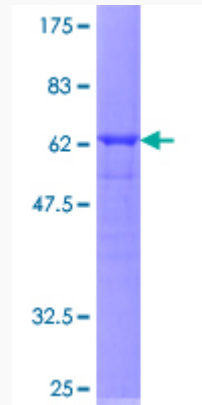
## GENE INFORMATION

<b>Gene Name</b>	APOL3 apolipoprotein L, 3 [ Homo sapiens ]
<b>Official Symbol</b>	APOL3
<b>Synonyms</b>	APOL3; apolipoprotein L, 3; apolipoprotein L3; APOLIII; CG12 1; CG12_1; apoL-III; apolipoprotein L-III; TNF-inducible protein CG12-1; CG121;
<b>Gene ID</b>	80833
<b>mRNA Refseq</b>	NM_145640
<b>Protein Refseq</b>	NP_663615
<b>MIM</b>	607253
<b>UniProt ID</b>	O95236

 Tel: 1-631-559-9269 1-516-512-3133

 Email: [info@creative-biomart.com](mailto:info@creative-biomart.com)  Fax: 1-631-938-8127

 45-1 Ramsey Road, Shirley, NY 11967, USA



12.5% SDS-PAGE Stained with Coomassie Blue.

Tel: 1-631-559-9269 1-516-512-3133

Email: [info@creative-biomart.com](mailto:info@creative-biomart.com) Fax: 1-631-938-8127

45-1 Ramsey Road, Shirley, NY 11967, USA