

## Recombinant Human APOL4 protein, GST-tagged

Cat. No. APOL4-714H Lot. No. (See product label)

### SPECIFICATION

<b>Product Overview</b>	Human APOL4 full-length ORF ( ENSP00000331089, 1 a.a. - 107 a.a.) recombinant protein with GST-tag at N-terminal.
<b>Species</b>	Human
<b>Source</b>	Wheat Germ
<b>Description</b>	The protein encoded by this gene is a member of the apolipoprotein L family and may play a role in lipid exchange and transport throughout the body, as well as in reverse cholesterol transport from peripheral cells to the liver. Two transcript variants encoding two different isoforms have been found for this gene. Only one of the isoforms appears to be a secreted protein. [provided by RefSeq, Jul 2008]
<b>Molecular Mass</b>	37.7 kDa
<b>AA Sequence</b>	MGSWVQLITSVGTSGFLGVRVREEGAGMRCSKTIQAGQWLDSSKGPLGPSPPPV PTAGYSSSFCVHYVNLLPGVLVLSVTSQYPHLSMALCQLAAHDWPRLSCVCV
<b>Applications</b>	Enzyme-linked Immunoabsorbent Assay; Western Blot (Recombinant protein); Antibody Production; Protein Array
<b>Notes</b>	Best use within three months from the date of receipt of this protein.
<b>Storage</b>	Store at -80 centigrade. Aliquot to avoid repeated freezing and thawing.

 Tel: 1-631-559-9269 1-516-512-3133

 Email: [info@creative-biomart.com](mailto:info@creative-biomart.com)  Fax: 1-631-938-8127

 45-1 Ramsey Road, Shirley, NY 11967, USA

**Storage Buffer** 50 mM Tris-HCl, 10 mM reduced Glutathione, pH=8.0 in the elution buffer.

## GENE INFORMATION

**Gene Name** APOL4 apolipoprotein L, 4 [ Homo sapiens ]

**Official Symbol** APOL4

**Synonyms** APOL4; apolipoprotein L, 4; apolipoprotein L4; APOLIV; apolipoprotein L-IV; APOL-IV;

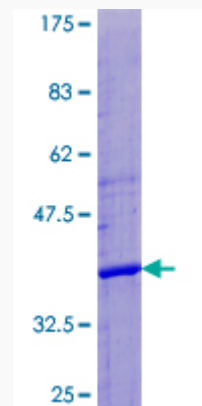
**Gene ID** 80832

**mRNA Refseq** NM\_030643

**Protein Refseq** NP\_085146

**MIM** 607254

**UniProt ID** Q9BPW4



 Tel: 1-631-559-9269 1-516-512-3133

 Email: [info@creative-biomart.com](mailto:info@creative-biomart.com)  Fax: 1-631-938-8127

 45-1 Ramsey Road, Shirley, NY 11967, USA



12.5% SDS-PAGE Stained with Coomassie Blue.

 Tel: 1-631-559-9269 1-516-512-3133

 Email: [info@creative-biomart.com](mailto:info@creative-biomart.com)  Fax: 1-631-938-8127

 45-1 Ramsey Road, Shirley, NY 11967, USA