

Recombinant Human APOLD1 Full Length Transmembrane protein, His-tagged

Cat. No. APOLD1-1536H **Lot. No.** (See product label)

SPECIFICATION

Product Overview	Recombinant Human APOLD1 protein(Q96LR9)(1-279aa), fused to N-terminal His tag, was expressed in E. coli.
Species	Human
Source	E.coli
ProteinLength	1-279aa
Form	<p>If the delivery form is liquid, the default storage buffer is Tris/PBS-based buffer, 5%-50% glycerol.</p> <p>If the delivery form is lyophilized powder, the buffer before lyophilization is Tris/PBS-based buffer, 6% Trehalose, pH 8.0.</p>
Molecular Mass	33.4 kDa
AA Sequence	<p>MFRAPCHRLRARGTRKARAGAWRGCTFPCLGKGMERPAAREPHGPDALRRFQGL LLDRRGRLHGQVLRRLREVARRLERLRRRSLVANVAGSSLSATGALAAIVGLSLSPVT LGTSLLVSAVGLGVATAGGAVTITSDLSLIFCNSRELRRVQEIAATCQDQMREILSCL EFFCRWQGCGRDQLLQCGRNASIALYNSVYFIVFFGSRGFLIPRRAEGDTKVSQAVL KAKIQKLAESLESCTGALDELSEQLESRVQLCTKSSRGHDLKISADQRAGLFF</p>
Purity	Greater than 85% as determined by SDS-PAGE.

 Tel: 1-631-559-9269 1-516-512-3133

 Email: info@creative-biomart.com  Fax: 1-631-938-8127

 45-1 Ramsey Road, Shirley, NY 11967, USA

Storage	Store at -20°C/-80°C upon receipt, aliquoting is necessary for mutiple use. Avoid repeated freeze-thaw cycles.
Reconstitution	Please reconstitute protein in deionized sterile water to a concentration of 0.1-1.0 mg/mL. We recommend to add 5-50% of glycerol (final concentration) and aliquot for long-term storage at -20°C/-80°C. Our default final concentration of glycerol is 50%.

GENE INFORMATION

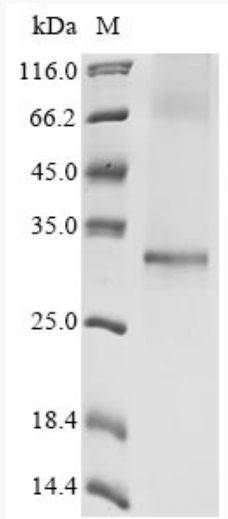
Gene Name	APOLD1 apolipoprotein L domain containing 1 [Homo sapiens]
Official Symbol	APOLD1
Synonyms	APOLD1; apolipoprotein L domain containing 1; apolipoprotein L domain-containing protein 1; DKFZP434F0318; FLJ25138; vascular early response gene protein; VERGE; FLJ95166; DKFZp434F0318;
Gene ID	81575
mRNA Refseq	NM_001130415
Protein Refseq	NP_001123887
MIM	612456
UniProt ID	Q96LR9

 Tel: 1-631-559-9269 1-516-512-3133

 Email: info@creative-biomart.com  Fax: 1-631-938-8127

 45-1 Ramsey Road, Shirley, NY 11967, USA

SDS-PAGE



 Tel: 1-631-559-9269 1-516-512-3133

 Email: info@creative-biomart.com  Fax: 1-631-938-8127

 45-1 Ramsey Road, Shirley, NY 11967, USA