

## Recombinant Human APOM Protein, Myc/DDK-tagged, C13 and N15-labeled

**Cat. No.** APOM-3636H    **Lot. No.** (See product label)

### SPECIFICATION

<b>Product Overview</b>	APOM MS Standard C13 and N15-labeled recombinant protein (NP_061974) with a C-terminal MYC/DDK tag, was expressed in HEK293 cells.
<b>Species</b>	Human
<b>Source</b>	HEK293
<b>Description</b>	The protein encoded by this gene is an apolipoprotein and member of the lipocalin protein family. It is found associated with high density lipoproteins and to a lesser extent with low density lipoproteins and triglyceride-rich lipoproteins. The encoded protein is secreted through the plasma membrane but remains membrane-bound, where it is involved in lipid transport. Alternate splicing results in both coding and non-coding variants of this gene.
<b>Molecular Mass</b>	21.1 kDa
<b>AA Sequence</b>	MFHQIWAALLYFYGIILNSIYQCPEHSQLTTLGVDGKEFPEVHLGQWYFIAGAAPTKE ELATFDPVDNIVFNMAAGSAPMQLHLRATIRMKDGLCVPRKWIYHLTEGSTDLRTEG RPDMKTELFSSSCP GGIMLNETGQGYQRFLLYNRSPHPPEKCVVEEFKSLTSCLDISK AFLLTPRNQEACELSNNTRTRPLEQKLISEEDLAANDILDYKDDDDKV
<b>Purity</b>	> 80% as determined by SDS-PAGE and Coomassie blue staining
<b>Stability</b>	Stable for 3 months from receipt of products under proper storage and handling

 Tel: 1-631-559-9269    1-516-512-3133

 Email: [info@creative-biomart.com](mailto:info@creative-biomart.com)     Fax: 1-631-938-8127

 45-1 Ramsey Road, Shirley, NY 11967, USA

conditions.

**Storage** Store at -80 centigrade. Avoid repeated freeze-thaw cycles.

**Concentration** 50 µg/mL as determined by BCA

**Storage Buffer** 100 mM glycine, 25 mM Tris-HCl, pH 7.3.

## GENE INFORMATION

**Gene Name** [APOM apolipoprotein M \[ Homo sapiens \(human\) \]](#)

**Official Symbol** [APOM](#)

**Synonyms** APOM; apolipoprotein M; ApoM; G3a; NG20; protein G3a; NG20-like protein; alternative name: G3a, NG20; apo-M; HSPC336; MGC22400;

**Gene ID** [55937](#)

**mRNA Refseq** [NM\\_019101](#)

**Protein Refseq** [NP\\_061974](#)

**MIM** [606907](#)

**UniProt ID** [O95445](#)

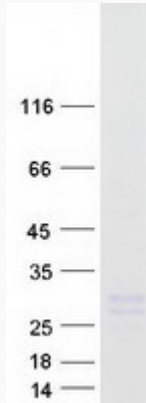
 Tel: 1-631-559-9269 1-516-512-3133

 Email: [info@creative-biomart.com](mailto:info@creative-biomart.com)  Fax: 1-631-938-8127

 45-1 Ramsey Road, Shirley, NY 11967, USA



SDS-PAGE



Tel: 1-631-559-9269 1-516-512-3133

Email: [info@creative-biomart.com](mailto:info@creative-biomart.com) Fax: 1-631-938-8127

45-1 Ramsey Road, Shirley, NY 11967, USA