

## Active Recombinant Human APP protein, His & GST-tagged

Cat. No. APP-192H Lot. No. (See product label)

### SPECIFICATION

<b>Product Overview</b>	Active Recombinant Human APP protein(Asp 672-Val 711)(P05067-1), corresponding to the Beta-amyloid protein 40, was expressed in E. coli, fused with the N-terminal polyhistidine-tagged GST tag at the N-terminus.
<b>Species</b>	Human
<b>Source</b>	E. coli
<b>ProteinLength</b>	672-711 aa
<b>Form</b>	Lyophilized from sterile 50mM Tris, 500mM NaCl, pH 7.5.
<b>Bio-activity</b>	Measured by its ability to bind biotinylated recombinant human AGER in a functional ELISA.
<b>Molecular Mass</b>	The recombinant human Beta-APP40/GST chimera consists of 278 amino acids and has a calculated molecular mass of 31.8 kDa. It migrates as an approximately 33 kDa band in SDS-PAGE under reducing conditions.
<b>Purity</b>	> 92 % as determined by SDS-PAGE
<b>Storage</b>	Store it under sterile conditions at -20°C to -80°C upon receiving. Recommend to aliquot the protein into smaller quantities for optimal storage. Avoid repeated freeze-thaw cycles.

 Tel: 1-631-559-9269 1-516-512-3133

 Email: [info@creative-biomart.com](mailto:info@creative-biomart.com)  Fax: 1-631-938-8127

 45-1 Ramsey Road, Shirley, NY 11967, USA

**Reconstitution** It is recommended that sterile water be added to the vial to prepare a stock solution of 0.2 ug/ul. Centrifuge the vial at 4°C before opening to recover the entire contents.

## GENE INFORMATION

**Gene Name** [APP amyloid beta \(A4\) precursor protein \[ Homo sapiens \]](#)

**Official Symbol** [APP](#)

**Synonyms** APP; amyloid beta (A4) precursor protein; AD1, Alzheimer disease; amyloid beta A4 protein; peptidase nexin II; preA4; protease nexin-II; peptidase nexin-II; beta-amyloid peptide; alzheimer disease amyloid protein; cerebral vascular amyloid peptide; AAA; AD1; PN2; ABPP; APPI; CVAP; ABETA; PN-II; CTFgamma;

**Gene ID** [351](#)

**mRNA Refseq** [NM\\_000484](#)

**Protein Refseq** [NP\\_000475](#)

**MIM** [104760](#)

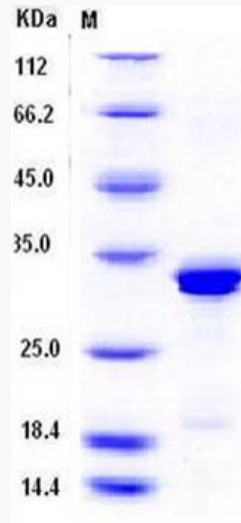
**UniProt ID** [P05067](#)

 Tel: 1-631-559-9269 1-516-512-3133

 Email: [info@creative-biomart.com](mailto:info@creative-biomart.com)  Fax: 1-631-938-8127

 45-1 Ramsey Road, Shirley, NY 11967, USA

**SDS-PAGE**



 Tel: 1-631-559-9269 1-516-512-3133

 Email: [info@creative-biomart.com](mailto:info@creative-biomart.com)  Fax: 1-631-938-8127

 45-1 Ramsey Road, Shirley, NY 11967, USA