

## Recombinant Human APP Protein(Met1-Lys687), His-tagged

Cat. No. APP-21H Lot. No. (See product label)

### SPECIFICATION

<b>Product Overview</b>	Recombinant Human APP Protein(Met1-Lys687)(P05067), fused with C-terminal His Tag, was expressed in HEK293.
<b>Species</b>	Human
<b>Source</b>	HEK293
<b>ProteinLength</b>	Met1-Lys687
<b>Form</b>	Lyophilized from a 0.22 μm filtered solution of PBS, pH 7.4.
<b>Bio-activity</b>	Measured by its ability to inhibit trypsin cleavage of a fluorogenic peptide substrate, Mca-RPKPVE-Nval-WRK(Dnp)-NH <sub>2</sub> . The IC <sub>50</sub> value is < 0.24 nM.
<b>Endotoxin</b>	<0.1EU/μg
<b>Purity</b>	> 97% by SDS-PAGE.
<b>Storage</b>	Store the lyophilized protein at -20°C to -80°C for 12 months. After reconstitution, the protein solution is stable at -20°C for 3 months, at 2-8°C for up to 1 week.
<b>Reconstitution</b>	Centrifuge the vial before opening. Reconstitute to a concentration of 0.1-0.5 mg/mL in sterile distilled water. Avoid vortex or vigorously pipetting the protein. For long term storage, it is recommended to add a carrier protein or stabilizer (e.g. 0.1% BSA, 5%

 Tel: 1-631-559-9269 1-516-512-3133

 Email: [info@creative-biomart.com](mailto:info@creative-biomart.com)  Fax: 1-631-938-8127

 45-1 Ramsey Road, Shirley, NY 11967, USA

HSA, 10% FBS or 5% Trehalose), and aliquot the reconstituted protein solution to minimize free-thaw cycles.

## GENE INFORMATION

**Gene Name** [APP amyloid beta \(A4\) precursor protein \[ Homo sapiens \]](#)

**Official Symbol** [APP](#)

**Synonyms** APP; amyloid beta (A4) precursor protein; AD1, Alzheimer disease; amyloid beta A4 protein; peptidase nexin II; preA4; protease nexin-II; peptidase nexin-II; beta-amyloid peptide; alzheimer disease amyloid protein; cerebral vascular amyloid peptide; AAA; AD1; PN2; ABPP; APPI; CVAP; ABETA; PN-II; CTFgamma;

**Gene ID** [351](#)

**mRNA Refseq** [NM\\_000484](#)

**Protein Refseq** [NP\\_000475](#)

**MIM** [104760](#)

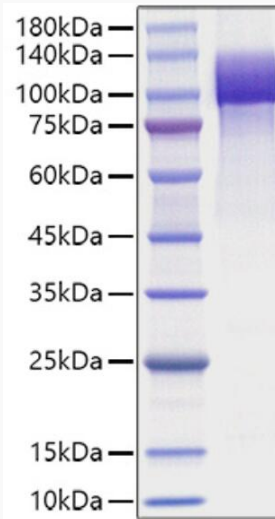
**UniProt ID** [P05067](#)

 Tel: 1-631-559-9269 1-516-512-3133

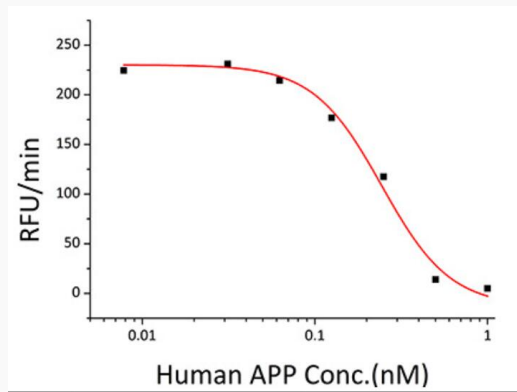
 Email: [info@creative-biomart.com](mailto:info@creative-biomart.com)  Fax: 1-631-938-8127

 45-1 Ramsey Road, Shirley, NY 11967, USA

**SDS-PAGE**



**Activity**



 Tel: 1-631-559-9269 1-516-512-3133

 Email: [info@creative-biomart.com](mailto:info@creative-biomart.com)  Fax: 1-631-938-8127

 45-1 Ramsey Road, Shirley, NY 11967, USA