

Active Recombinant Human APP Protein (18-701aa), C-His tagged

Cat. No. APP-23H **Lot. No.** (See product label)

SPECIFICATION

Product Overview	Recombinant human APP (18-701 aa), fused to His-tag at C-terminus, was expressed in HEK293 cell and purified by using conventional chromatography techniques.
Species	Human
Source	HEK293
ProteinLength	18-701 aa
Description	This gene encodes a cell surface receptor and transmembrane precursor protein that is cleaved by secretases to form a number of peptides. Some of these peptides are secreted and can bind to the acetyltransferase complex APBB1/TIP60 to promote transcriptional activation, while others form the protein basis of the amyloid plaques found in the brains of patients with Alzheimer disease. In addition, two of the peptides are antimicrobial peptides, having been shown to have bacteriocidal and antifungal activities. Mutations in this gene have been implicated in autosomal dominant Alzheimer disease and cerebroarterial amyloidosis (cerebral amyloid angiopathy). Multiple transcript variants encoding several different isoforms have been found for this gene.
Form	Liquid
Bio-activity	The IC50 value is ≤ 1 nM, The inhibitory function of APP on activity of trypsin was

 Tel: 1-631-559-9269 1-516-512-3133

 Email: info@creative-biomart.com  Fax: 1-631-938-8127

 45-1 Ramsey Road, Shirley, NY 11967, USA

measured by a fluorometric assay using Mca-RPKPVE-Nval-WRK(Dnp)-NH₂ at pH 7.5 at 37 centigrade.

Molecular Mass 78.2 kDa (690aa)

AA Sequence

LEVPTDGNAGLLAEPQIAMFCGRLNMHMNVQNGKWSDPSGKTCIDTKEGILQYC
 QEVYPELQITNVVEANQPVTIQNWCKRGRKQCKTHPHFVIPYRCLVGEFVSDALLVP
 DKCKFLHQERMDVCETHLHWHTVAKETCSEKSTNLHDYGMLLPCGIDKFRGVEFVC
 CPLAEESDNVDSADAEEDSDVWWGGADTDYADGSEDKVVEVAEEEEVAEVEEE
 EADDEDDEDGDEVEEEAEPYEEATERTTSIATTTTTTTSVEEVVREVCSEAET
 GPCRAMISRWFYFDVTEGKCAPFFYGGCGGNRNNFDTEEYCMVCGSAMSQSLLK
 TTQEPLARDPVKLPTTAASTPDAVDKYLETPGDENEHAHFQKAKERLEAKHRERMS
 QVMREWEEAERQAKNLPKADKKAVIQHFQEKVESLEQEAANERQQLVETHMARVE
 AMLNDRRRLALENYITALQAVPPRPRHVFNMLKKYVRAEQKDRQHTLKHFEHVRMV
 DPKKAAQIRSQVMTHLRVIYERMNQSLSLLYNVAVAEEIQDEVELLQKEQNYSSD
 VLANMISEPRISYGN DALMPSLTETKTTVELLPVNGEFLDDLQPWHSFGADSV PAN
 TENEVEPVDARPAADRGLTTRPGSGLTNIKTEEISEVKMDAEFRHDSGYEVHHQKLV
 FFAEDVGSNKGA

Endotoxin < 1 EU/μg of protein (determined by LAL method)

Purity > 90% by SDS-PAGE

Applications SDS-PAGE, Enzyme Activity

Notes Note: For research use only. This product is not intended or approved for human, diagnostics or veterinary use.

Storage Can be stored at +2 to +8 centigrade for 1 week. For long term storage, aliquot and store at -20 to -80 centigrade. Avoid repeated freezing and thawing cycles.

 Tel: 1-631-559-9269 1-516-512-3133

 Email: info@creative-biomart.com  Fax: 1-631-938-8127

 45-1 Ramsey Road, Shirley, NY 11967, USA

Concentration 0.5 mg/mL (determined by Absorbance at 280nm)

Storage Buffer Phosphate-Buffered Saline (pH 7.4) containing 10% glycerol

GENE INFORMATION

Gene Name [APP amyloid beta \(A4\) precursor protein \[Homo sapiens \(human\) \]](#)

Official Symbol [APP](#)

Synonyms

APP; amyloid beta (A4) precursor protein; AD1, Alzheimer disease; amyloid beta A4 protein; peptidase nexin II; preA4; protease nexin-II; peptidase nexin-II; beta-amyloid peptide; alzheimer disease amyloid protein; cerebral vascular amyloid peptide; AAA; AD1; PN2; ABPP; APPI; CVAP; ABETA; PN-II; CTFgamma

Gene ID [351](#)

mRNA Refseq [NM_000484](#)

Protein Refseq [NP_000475](#)

MIM [104760](#)

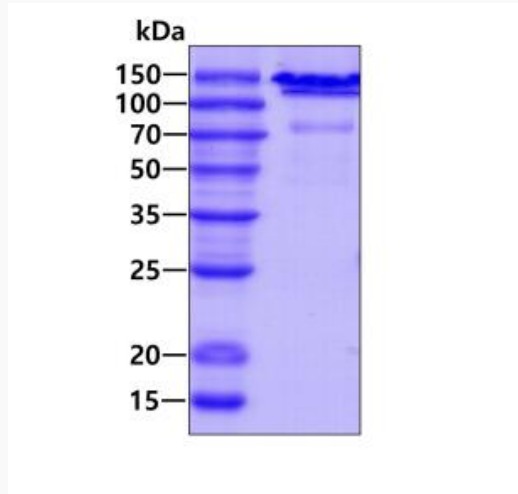
UniProt ID [P05067](#)

 Tel: 1-631-559-9269 1-516-512-3133

 Email: info@creative-biomart.com  Fax: 1-631-938-8127

 45-1 Ramsey Road, Shirley, NY 11967, USA

SDS-PAGE



3 μ g by SDS-PAGE under reducing condition and visualized by coomassie blue stain.

 Tel: 1-631-559-9269 1-516-512-3133

 Email: info@creative-biomart.com  Fax: 1-631-938-8127

 45-1 Ramsey Road, Shirley, NY 11967, USA