

Recombinant Human APP protein, His & GST-tagged

Cat. No. APP-26791TH Lot. No. (See product label)

SPECIFICATION

Product Overview	Recombinant Human APP protein(Asp672-Val710)(P05067-1), corresponding to the Beta-amyloid protein 39, was expressed in E. coli, fused with the N-terminal polyhistidine-tagged GST tag at the N-terminus.
Species	Human
Source	E. coli
ProteinLength	672-710 aa
Form	Lyophilized from sterile 50 mM Tris, 100 mM NaCl, 20% glycerol, 0.05% Tween 20, pH 9.5.
Molecular Mass	The recombinant human Beta-APP39/GST chimera consists of 278 amino acids and has a calculated molecular mass of 32.2 KDa. It migrates as an approximately 34 KDa band in SDS-PAGE under reducing conditions.
Purity	> 85 % as determined by SDS-PAGE
Storage	Store it under sterile conditions at -20°C to -80°C upon receiving. Recommend to aliquot the protein into smaller quantities for optimal storage. Avoid repeated freeze-thaw cycles.
Reconstitution	It is recommended that sterile water be added to the vial to prepare a stock solution of 0.2 ug/ul. Centrifuge the vial at 4°C before opening to recover the entire contents.

 Tel: 1-631-559-9269 1-516-512-3133

 Email: info@creative-biomart.com  Fax: 1-631-938-8127

 45-1 Ramsey Road, Shirley, NY 11967, USA

GENE INFORMATION

Gene Name APP amyloid beta (A4) precursor protein [Homo sapiens]

Official Symbol APP

Synonyms APP; amyloid beta (A4) precursor protein; AD1, Alzheimer disease; amyloid beta A4 protein; peptidase nexin II; preA4; protease nexin-II; peptidase nexin-II; beta-amyloid peptide; alzheimer disease amyloid protein; cerebral vascular amyloid peptide; AAA; AD1; PN2; ABPP; APPI; CVAP; ABETA; PN-II; CTFgamma;

Gene ID 351

mRNA Refseq NM_000484

Protein Refseq NP_000475

MIM 104760

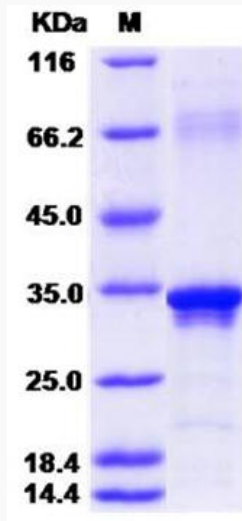
UniProt ID P05067

 Tel: 1-631-559-9269 1-516-512-3133

 Email: info@creative-biomart.com  Fax: 1-631-938-8127

 45-1 Ramsey Road, Shirley, NY 11967, USA

SDS-PAGE



 Tel: 1-631-559-9269 1-516-512-3133

 Email: info@creative-biomart.com  Fax: 1-631-938-8127

 45-1 Ramsey Road, Shirley, NY 11967, USA