

Recombinant Human APP protein, His-tagged

Cat. No. APP-7856H **Lot. No.** (See product label)

SPECIFICATION

Product Overview	Recombinant Human APP protein(175-289 aa), fused with N-terminal His tag, was expressed in E. coli.
ProteinLength	175-289 aa
Tag	N-His
Form	The purified protein was Lyophilized from sterile PBS (58mM Na ₂ HPO ₄ , 17mM NaH ₂ PO ₄ , 68mM NaCl, pH7.4). 5 % trehalose and 5 % mannitol are added as protectant before lyophilization.
Purity	95%, by SDS-PAGE with Coomassie Brilliant Blue staining.
Storage	Short-term storage: Store at 2-8°C for (1-2 weeks). Long-term storage: Aliquot and store at -20°C to -80°C for up to 3 months, reconstitution with sterile water and addition of an equal volume of glycerol. Avoid repeat freeze-thaw cycles.
Reconstitution	Reconstitute at 0.25 µg/µl in 200 µl sterile water for short-term storage. After reconstitution with sterile water, if glycerol has no effect on subsequent experiments, it is recommended to add an equal volume of glycerol for long-term storage.
AA Sequence	GIDKFRGVEFVCCPLAEESDNVDSADAEEDDSVWWGGADTDYADGSEDKVVEVA EEEEVAEVEEEEEADDEDEDGDEVEEEAEPEYEEATERTTTSIATTTTTTTTSESVEEV VRE

 Tel: 1-631-559-9269 1-516-512-3133

 Email: info@creative-biomart.com  Fax: 1-631-938-8127

 45-1 Ramsey Road, Shirley, NY 11967, USA

GENE INFORMATION

Gene Name APP amyloid beta (A4) precursor protein [Homo sapiens]

Official Symbol APP

Synonyms APP; amyloid beta (A4) precursor protein; AD1, Alzheimer disease; amyloid beta A4 protein; peptidase nexin II; preA4; protease nexin-II; peptidase nexin-II; beta-amyloid peptide; alzheimer disease amyloid protein; cerebral vascular amyloid peptide; AAA; AD1; PN2; ABPP; APPI; CVAP; ABETA; PN-II; CTFgamma;

Gene ID 351

mRNA Refseq NM_000484

Protein Refseq NP_000475

MIM 104760

UniProt ID P05067

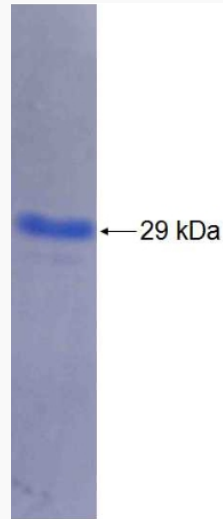
 Tel: 1-631-559-9269 1-516-512-3133

 Email: info@creative-biomart.com  Fax: 1-631-938-8127

 45-1 Ramsey Road, Shirley, NY 11967, USA



SDS-PAGE



Tel: 1-631-559-9269 1-516-512-3133

Email: info@creative-biomart.com Fax: 1-631-938-8127

45-1 Ramsey Road, Shirley, NY 11967, USA